

NF-H antibody [NEFL.H/2324R]

Cat. No. GTX02687

Host	Rabbit
Clonality	Monoclonal
Isotype	IgG
Application	WB, IHC-P, FACS
Reactivity	Human, Mouse, Rat, Chicken, Pig

Package
100 µg

APPLICATION

Application Note

*Optimal dilutions/concentrations should be determined by the researcher.

Suggested dilution	Recommended dilution
WB	1-2 µg/ml
IHC-P	1-2 µg/ml
FACS	1-2 µg/million cells

Note : Staining of formalin-fixed tissues requires heating tissue sections in 10mM Tris buffer with 1mM EDTA (pH 9.0) for 45 min at 95°C followed by cooling at RT for 20 minutes.

Not tested in other applications.

Calculated MW 112 kDa. ([Note](#))

PROPERTIES

Form	Liquid
Buffer	PBS, 0.05% BSA
Preservative	0.05% Sodium azide
Storage	Store as concentrated solution. Centrifuge briefly prior to opening vial. Store at 4°C.
Concentration	200 µg/ml (Please refer to the vial label for the specific concentration.)
Immunogen	Recombinant full-length human NEFH protein
Purification	Protein A/G purified
Conjugation	Unconjugated

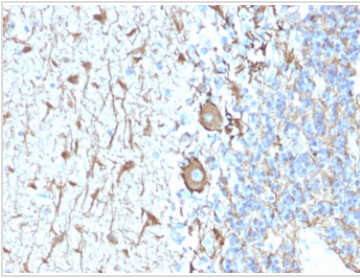
Note

For laboratory research use only. Not for any clinical, therapeutic, or diagnostic use in humans or animals. Not for animal or human consumption.

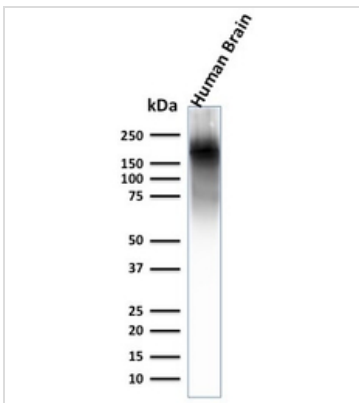
Purchasers shall not, and agree not to enable third parties to, analyze, copy, reverse engineer or otherwise attempt to determine the structure or sequence of the product.



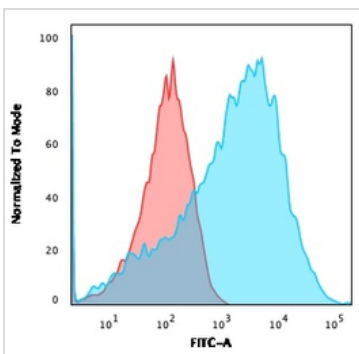
For full product information, images and publications, please visit our [website](#).

DATA IMAGES

GTX02687 IHC-P Image

IHC-P analysis of human cerebellum tissue section using GTX02687 NF-H antibody [NEFLH/2324R].


GTX02687 WB Image

WB analysis of human brain tissue lysate using GTX02687 NF-H antibody [NEFLH/2324R].


GTX02687 FACS Image

FACS analysis of HEK293 cells using GTX02687 NF-H antibody [NEFLH/2324R].

Blue : Primary antibody

Red : Isotype control



For full product information, images and publications, please visit our [website](https://www.genetex.com).