

NKX2.8 antibody [NKX28/3233R]

Cat. No. GTX02689

Host	Rabbit
Clonality	Monoclonal
Isotype	IgG
Applications	WB, ELISA
Reactivity	Human

Package
100 µg

Applications

Application Note

*Optimal dilutions/concentrations should be determined by the researcher.

Suggested dilution	Recommended dilution
WB	Assay dependent
ELISA	Assay dependent

Note : For ELISA coating, recommend using BSA-free format (please contact us for PBS only format).

Not tested in other applications.

Calculated MW 26 kDa. ([Note](#))

Properties

Form	Liquid
Buffer	PBS, 0.05% BSA
Preservative	0.05% Sodium azide
Storage	Store as concentrated solution. Centrifuge briefly prior to opening vial. Store at 4°C.
Concentration	200 µg/ml (Please refer to the vial label for the specific concentration.)
Immunogen	Human recombinant NKX2.8 protein fragment (around aa 10-123)
Purification	Protein A/G purified
Conjugation	Unconjugated

Note

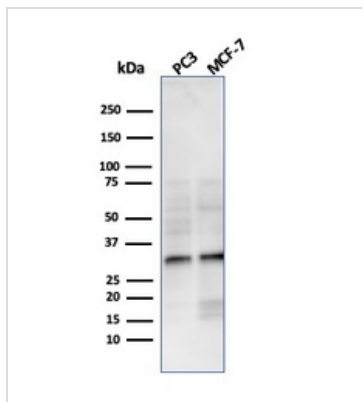
For laboratory research use only. Not for any clinical, therapeutic, or diagnostic use in humans or animals. Not for animal or human consumption.

Purchasers shall not, and agree not to enable third parties to, analyze, copy, reverse engineer or otherwise attempt to determine the structure or sequence of the product.



For full product information, images and publications, please visit our [website](#).

DATA IMAGES



GTx02689 WB Image

WB analysis of various samples using GTx02689 NKX2.8 antibody [NKX28/3233R].

Lane 1 : PC3 whole cell lysate

Lane 2 : MCF-7 whole cell lysate



For full product information, images and publications, please visit our [website](https://www.genetex.com).