

S100A4 antibody [S100A4/2750R]

Cat. No. GTX02703

Host	Rabbit
Clonality	Monoclonal
Isotype	IgG
Applications	WB, ICC/IF, IHC-P, FCM
Reactivity	Human, Mouse

Package
100 µg

Applications

Application Note

*Optimal dilutions/concentrations should be determined by the researcher.

Suggested dilution	Recommended dilution
WB	1-2 µg/ml
ICC/IF	1-2 µg/ml
IHC-P	1-2 µg/ml
FCM	1-2 µg/million cells

Note : Staining of formalin-fixed tissues requires heating tissue sections in 10mM Tris buffer with 1mM EDTA (pH 9.0) for 45 min at 95°C followed by cooling at RT for 20 minutes.

Not tested in other applications.

Calculated MW	12 kDa. (Note)
Observed MW (kDa)	10-12 kDa.

Properties

Form	Liquid
Buffer	PBS, 0.05% BSA
Preservative	0.05% Sodium azide
Storage	Store as concentrated solution. Centrifuge briefly prior to opening vial. Store at 4°C.
Concentration	200 µg/ml (Please refer to the vial label for the specific concentration.)
Immunogen	Recombinant fragment of human S100A4 protein (around aa1-200)
Purification	Protein A/G purified
Conjugation	Unconjugated



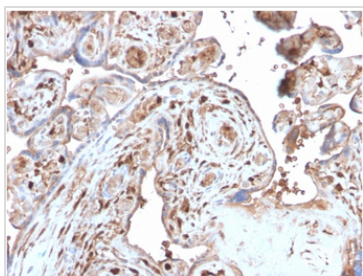
For full product information, images and publications, please visit our [website](#).

For laboratory research use only. Not for any clinical, therapeutic, or diagnostic use in humans or animals. Not for animal or human consumption.

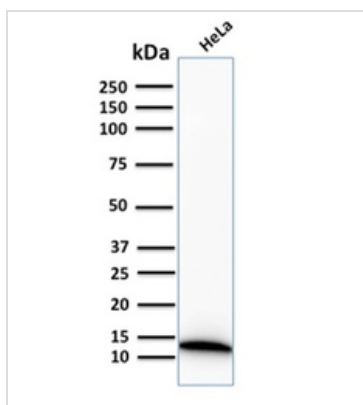
Note

Purchasers shall not, and agree not to enable third parties to, analyze, copy, reverse engineer or otherwise attempt to determine the structure or sequence of the product.

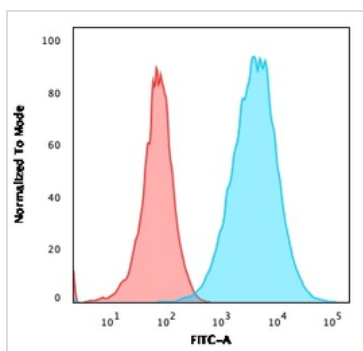
DATA IMAGES

**GTX02703 IHC-P Image**

IHC-P analysis of human placenta tissue section using GTX02703 S100A4 antibody [S100A4/2750R].

**GTX02703 WB Image**

WB analysis of HeLa whole cell lysate using GTX02703 S100A4 antibody [S100A4/2750R].

**GTX02703 FCM Image**

FACS analysis of A549 cells using GTX02703 S100A4 antibody [S100A4/2750R].

Blue : Primary antibody

Red : Isotype control



For full product information, images and publications, please visit our [website](#).