

## GluT1 antibody [GLUT1/3132R]

Cat. No. GTX02708

<b>Host</b>	Rabbit
<b>Clonality</b>	Monoclonal
<b>Isotype</b>	IgG
<b>Applications</b>	IHC-P, FCM, ELISA
<b>Reactivity</b>	Human

Package  
100 µg

## Applications

## Application Note

\*Optimal dilutions/concentrations should be determined by the researcher.

Suggested dilution	Recommended dilution
IHC-P	1-2 µg/ml
FCM	1-2 µg/million cells
ELISA	1-2 µg/ml (for coating)

**Note : Staining of formalin-fixed tissues requires heating tissue sections in 10mM Tris buffer with 1mM EDTA (pH 9.0) for 45 min at 95°C followed by cooling at RT for 20 minutes.**

**For ELISA coating, recommend using BSA-free format (please contact us for PBS only format).**

Not tested in other applications.

## Properties

<b>Form</b>	Liquid
<b>Buffer</b>	PBS, 0.05% BSA
<b>Preservative</b>	0.05% Sodium azide
<b>Storage</b>	Store as concentrated solution. Centrifuge briefly prior to opening vial. Store at 4°C.
<b>Concentration</b>	200 µg/ml (Please refer to the vial label for the specific concentration.)
<b>Immunogen</b>	Recombinant fragment of human GLUT1 protein (around aa 203-305)
<b>Purification</b>	Protein A/G purified
<b>Conjugation</b>	Unconjugated

## Note

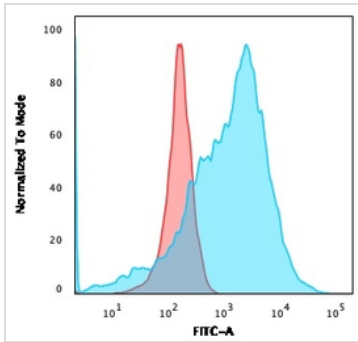
For laboratory research use only. Not for any clinical, therapeutic, or diagnostic use in humans or animals. Not for animal or human consumption.

Purchasers shall not, and agree not to enable third parties to, analyze, copy, reverse engineer or otherwise attempt to determine the structure or sequence of the product.



For full product information, images and publications, please visit our [website](#).

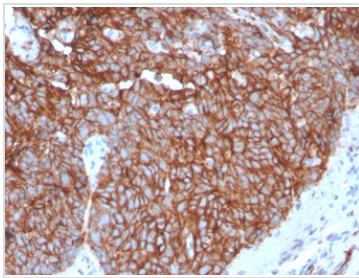
## DATA IMAGES

**GTX02708 FCM Image**

FACS analysis of K562 cells using GTX02708 GluT1 antibody [GLUT1/3132R].

Blue : Primary antibody

Red : Isotype control

**GTX02708 IHC-P Image**

IHC-P analysis of human tongue tissue section using GTX02708 GluT1 antibody [GLUT1/3132R].



For full product information, images and publications, please visit our [website](#).