

## SOX11 antibody [SOX11/3235R]

Cat. No. GTX02709

|              |            |
|--------------|------------|
| Host         | Rabbit     |
| Clonality    | Monoclonal |
| Isotype      | IgG        |
| Applications | IHC-P      |
| Reactivity   | Human      |

Package  
100 µg

## Applications

## Application Note

\*Optimal dilutions/concentrations should be determined by the researcher.

| Suggested dilution  | Recommended dilution |
|---|----------------------|
| IHC-P   | 2-4 µg/ml            |
| <b>Note : Staining of formalin-fixed tissues requires heating tissue sections in 10mM Tris buffer with 1mM EDTA (pH 9.0) for 45 min at 95°C followed by cooling at RT for 20 minutes.</b> |                      |

Not tested in other applications.

**Product Note** This antibody is highly specific and does not cross-react with other members of the SOX-family.

## Properties

|               |   |
|---------------|---|
| Form          | Liquid  |
| Buffer        | PBS, 0.05% BSA  |
| Preservative  | 0.05% Sodium azide  |
| Storage       | Store as concentrated solution. Centrifuge briefly prior to opening vial. Store at 4°C. |
| Concentration | 200 µg/ml (Please refer to the vial label for the specific concentration.)              |
| Immunogen     | Recombinant fragment (around aa300-400) of human SOX11 protein                          |
| Purification  | Protein A/G purified  |
| Conjugation   | Unconjugated  |

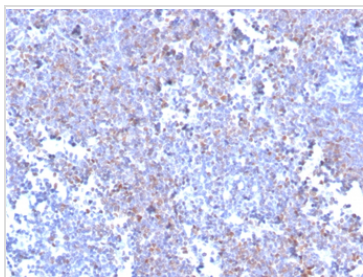
## Note

For laboratory research use only. Not for any clinical, therapeutic, or diagnostic use in humans or animals. Not for animal or human consumption.

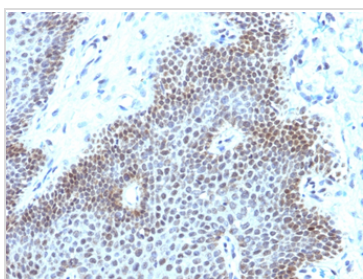
Purchasers shall not, and agree not to enable third parties to, analyze, copy, reverse engineer or otherwise attempt to determine the structure or sequence of the product.



For full product information, images and publications, please visit our [website](#).

**DATA IMAGES**

**GTX02709 IHC-P Image**

IHC-P analysis of human mantle cell lymphoma section using GTX02709 SOX11 antibody [SOX11/3235R].


**GTX02709 IHC-P Image**

IHC-P analysis of human cervical carcinoma section using GTX02709 SOX11 antibody [SOX11/3235R].



For full product information, images and publications, please visit our [website](#).