

SPTBN2 antibody [SPTBN2/2894R]

Cat. No. GTX02716

Host	Rabbit
Clonality	Monoclonal
Isotype	IgG
Applications	WB, IHC-P, FCM, ELISA
Reactivity	Human

Package
100 µg

Applications

Application Note

*Optimal dilutions/concentrations should be determined by the researcher.

Suggested dilution	Recommended dilution
WB	1-2 µg/ml
IHC-P	1-2 µg/ml
FCM	1-2 µg/million cells
ELISA	2-4 µg/ml (for coating)

Note : Staining of formalin-fixed tissues requires heating tissue sections in 10mM Tris buffer with 1mM EDTA (pH 9.0) for 45 min at 95°C followed by cooling at RT for 20 minutes.

For ELISA coating, recommend using BSA-free format (please contact us for PBS only format).

Not tested in other applications.

Calculated MW 271 kDa. ([Note](#))

Properties

Form	Liquid
Buffer	PBS, 0.05% BSA
Preservative	0.05% Sodium azide
Storage	Store as concentrated solution. Centrifuge briefly prior to opening vial. Store at 4°C.
Concentration	200 µg/ml (Please refer to the vial label for the specific concentration.)
Immunogen	Recombinant human SPTBN2 fragment (aa356-475)
Purification	Protein A/G purified
Conjugation	Unconjugated



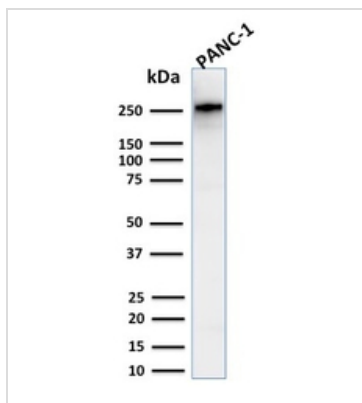
For full product information, images and publications, please visit our [website](#).

For laboratory research use only. Not for any clinical, therapeutic, or diagnostic use in humans or animals. Not for animal or human consumption.

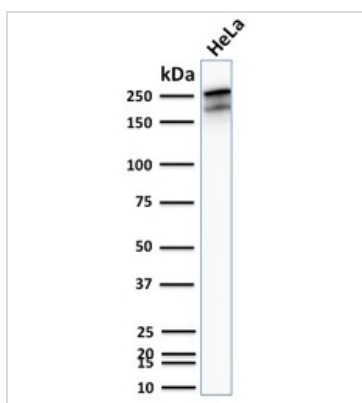
Note

Purchasers shall not, and agree not to enable third parties to, analyze, copy, reverse engineer or otherwise attempt to determine the structure or sequence of the product.

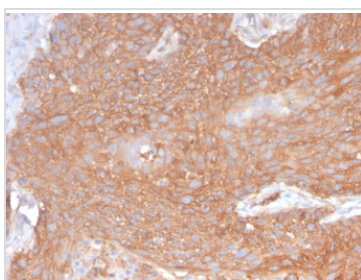
DATA IMAGES

**GTX02716 WB Image**

WB analysis of PANC-1 whole cell lysate using GTX02716 SPTBN2 antibody [SPTBN2/2894R].

**GTX02716 WB Image**

WB analysis of HeLa whole cell lysate using GTX02716 SPTBN2 antibody [SPTBN2/2894R].

**GTX02716 IHC-P Image**

IHC-P analysis of human pancreatic cancer section using GTX02716 SPTBN2 antibody [SPTBN2/2894R].



For full product information, images and publications, please visit our [website](#).