

# TIMP2 antibody [TIMP2/2488R]

**Cat. No. GTX02722**

<b>Host</b>	Rabbit
<b>Clonality</b>	Monoclonal
<b>Isotype</b>	IgG
<b>Applications</b>	IHC-P
<b>Reactivity</b>	Human, Mouse, Rat, Zebrafish, Rabbit, Bovine, Guinea pig

**Package**  
100 µg

## Applications

### Application Note

\*Optimal dilutions/concentrations should be determined by the researcher.

Suggested dilution	Recommended dilution
IHC-P	1-2 µg/ml
<b>Note : Staining of formalin-fixed tissues requires heating tissue sections in 10mM Tris buffer with 1mM EDTA (pH 9.0) for 45 min at 95°C followed by cooling at RT for 20 minutes.</b>	

Not tested in other applications.

## Properties

<b>Form</b>	Liquid
<b>Buffer</b>	PBS, 0.05% BSA
<b>Preservative</b>	0.05% Sodium azide
<b>Storage</b>	Store as concentrated solution. Centrifuge briefly prior to opening vial. Store at 4°C.
<b>Concentration</b>	200 µg/ml (Please refer to the vial label for the specific concentration.)
<b>Immunogen</b>	A synthetic peptide from the N-terminus of human TIMP2 protein (aa56-66) (DSGNDIYGNPI)
<b>Purification</b>	Protein A/G purified
<b>Conjugation</b>	Unconjugated

### Note

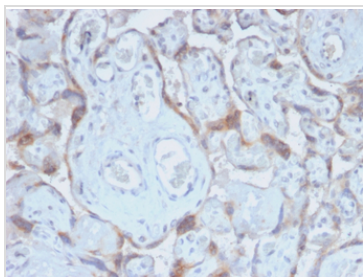
For laboratory research use only. Not for any clinical, therapeutic, or diagnostic use in humans or animals. Not for animal or human consumption.

Purchasers shall not, and agree not to enable third parties to, analyze, copy, reverse engineer or otherwise attempt to determine the structure or sequence of the product.



For full product information, images and publications, please visit our [website](https://www.genetex.com).

## DATA IMAGES



### GTx02722 IHC-P Image

IHC-P analysis of human placenta tissue section using GTx02722 TIMP2 antibody [TIMP2/2488R].



For full product information, images and publications, please visit our [website](#).