

p63 antibody [rTP40/3690] (Biotin)

Cat. No. GTX02730

Host	Mouse
Clonality	Monoclonal
Isotype	IgG1
Applications	ICC/IF, IHC-P, FCM
Reactivity	Human

Package
500 µl

Applications

Application Note

*Optimal dilutions/concentrations should be determined by the researcher.

Suggested dilution	Recommended dilution
ICC/IF	2-4 µg/ml
IHC-P	2-4 µg/ml
FCM	2-4 µg/million cells

Note : Staining of formalin-fixed tissues requires heating tissue sections in 10mM Tris buffer with 1mM EDTA (pH 9.0) for 45 min at 95°C followed by cooling at RT for 20 minutes.

Not tested in other applications.

Product Note This antibody is specific for delta-Np63 (DNp63) isoform.

Properties

Form	Liquid
Buffer	PBS, 0.05% BSA
Preservative	0.05% Sodium azide
Storage	Store as concentrated solution. Centrifuge briefly prior to opening vial. Store at 4°C.
Concentration	100 µg/ml (Please refer to the vial label for the specific concentration.)
Immunogen	A synthetic peptide from the N-terminal of human p40 protein
Purification	Protein A/G purified
Conjugation	Biotin

Note

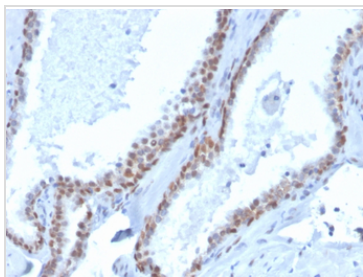
For laboratory research use only. Not for any clinical, therapeutic, or diagnostic use in humans or animals. Not for animal or human consumption.

Purchasers shall not, and agree not to enable third parties to, analyze, copy, reverse engineer or otherwise attempt to determine the structure or sequence of the product.



For full product information, images and publications, please visit our [website](#).

DATA IMAGES

**GTX02730 IHC-P Image**

IHC-P analysis of human prostate tissue section using GTX02730 p63 antibody [rTP40/3690] (Biotin).



For full product information, images and publications, please visit our [website](#).