

## Thymidine Phosphorylase antibody [rTYMP/3444]

Cat. No. GTX02733

|              |                   |
|--------------|-------------------|
| Host         | Mouse             |
| Clonality    | Monoclonal        |
| Isotype      | IgG1              |
| Applications | WB, IHC-P         |
| Reactivity   | Human, Mouse, Rat |

Package  
100 µg

## Applications

## Application Note

\*Optimal dilutions/concentrations should be determined by the researcher.

| Suggested dilution | Recommended dilution |
|--------------------|----------------------|
| WB                 | Assay dependent      |
| IHC-P              | 1-2 µg/ml            |

**Note : Staining of formalin-fixed tissues requires heating tissue sections in 10mM Tris buffer with 1mM EDTA (pH 9.0) for 45 min at 95°C followed by cooling at RT for 20 minutes.**

Not tested in other applications.

**Calculated MW** 50 kDa. ( [Note](#) )

## Properties

|               |   |
|---------------|---|
| Form          | Liquid  |
| Buffer        | PBS, 0.05% BSA  |
| Preservative  | 0.05% Sodium azide  |
| Storage       | Store as concentrated solution. Centrifuge briefly prior to opening vial. Store at 4°C. |
| Concentration | 200 µg/ml (Please refer to the vial label for the specific concentration.)              |
| Immunogen     | Recombinant full-length human Thymidine Phosphorylase (TP / PD-ECGF) protein            |
| Purification  | Protein A/G purified  |
| Conjugation   | Unconjugated  |

## Note

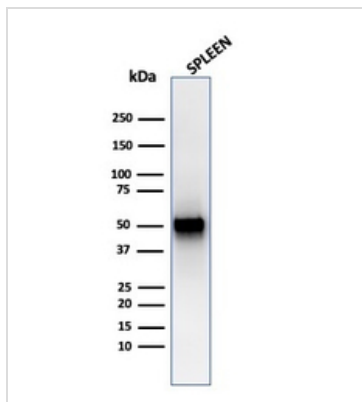
For laboratory research use only. Not for any clinical, therapeutic, or diagnostic use in humans or animals. Not for animal or human consumption.

Purchasers shall not, and agree not to enable third parties to, analyze, copy, reverse engineer or otherwise attempt to determine the structure or sequence of the product.



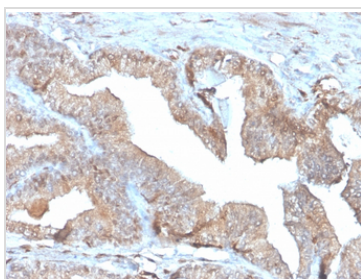
For full product information, images and publications, please visit our [website](#).

## DATA IMAGES



### GTx02733 WB Image

WB analysis of human spleen tissue lysate using GTx02733 Thymidine Phosphorylase antibody [rTYMP/3444].



### GTx02733 IHC-P Image

IHC-P analysis of human placenta tissue section using GTx02733 Thymidine Phosphorylase antibody [rTYMP/3444].



For full product information, images and publications, please visit our [website](#).