

TRP1 antibody [TYRP1/2340R]

Cat. No. GTX02736

Host	Rabbit
Clonality	Monoclonal
Isotype	IgG
Application	IHC-P, ELISA
Reactivity	Human

Package
100 µg

APPLICATION

Application Note

*Optimal dilutions/concentrations should be determined by the researcher.

Suggested dilution	Recommended dilution
IHC-P	1-2 µg/ml
ELISA	2-4 µg/ml (for coating)

Note : Staining of formalin-fixed tissues requires heating tissue sections in 10mM Tris buffer with 1mM EDTA (pH 9.0) for 45 min at 95°C followed by cooling at RT for 20 minutes.

For ELISA coating, recommend using BSA-free format (please contact us for PBS only format).

Not tested in other applications.

Calculated MW 61 kDa. ([Note](#))

PROPERTIES

Form	Liquid
Buffer	PBS, 0.05% BSA
Preservative	0.05% Sodium azide
Storage	Store as concentrated solution. Centrifuge briefly prior to opening vial. Store at 4°C.
Concentration	200 µg/ml (Please refer to the vial label for the specific concentration.)
Immunogen	A recombinant fragment (around aa 257-377) of human TYRP1 protein
Purification	Protein A/G purified
Conjugation	Unconjugated

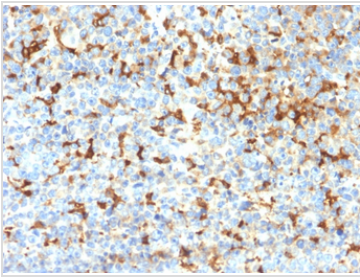
Note

For laboratory research use only. Not for any clinical, therapeutic, or diagnostic use in humans or animals. Not for animal or human consumption.

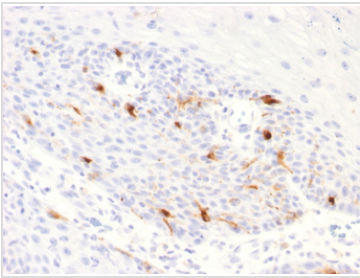
Purchasers shall not, and agree not to enable third parties to, analyze, copy, reverse engineer or otherwise attempt to determine the structure or sequence of the product.



For full product information, images and publications, please visit our [website](#).

DATA IMAGES

GTX02736 IHC-P Image

IHC-P analysis of human melanoma tissue section using GTX02736 TRP1 antibody [TYRP1/2340R].


GTX02736 IHC-P Image

IHC-P analysis of human basal cell carcinoma section using GTX02736 TRP1 antibody [TYRP1/2340R].



For full product information, images and publications, please visit our [website](#).