

PGP9.5 antibody [UCHL1/4556R]

Cat. No. GTX02737

Host	Rabbit
Clonality	Monoclonal
Isotype	IgG
Applications	WB, IHC-P
Reactivity	Human, Rat

Package
100 µg

Applications

Application Note

*Optimal dilutions/concentrations should be determined by the researcher.

Suggested dilution	Recommended dilution
WB	2-4 µg/ml
IHC-P	1-2 µg/ml

Note : Staining of formalin-fixed tissues requires heating tissue sections in 10mM Tris buffer with 1mM EDTA (pH 9.0) for 45 min at 95°C followed by cooling at RT for 20 minutes.

Not tested in other applications.

Calculated MW	25 kDa. (Note)
Observed MW (kDa)	20-30 kDa.

Properties

Form	Liquid
Buffer	PBS, 0.05% BSA
Preservative	0.05% Sodium azide
Storage	Store as concentrated solution. Centrifuge briefly prior to opening vial. Store at 4°C.
Concentration	200 µg/ml (Please refer to the vial label for the specific concentration.)
Immunogen	Recombinant full-length human UCHL1 protein
Purification	Protein A/G purified
Conjugation	Unconjugated



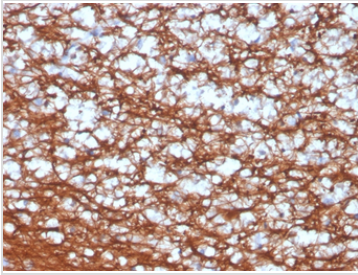
For full product information, images and publications, please visit our [website](#).

For laboratory research use only. Not for any clinical, therapeutic, or diagnostic use in humans or animals. Not for animal or human consumption.

Note

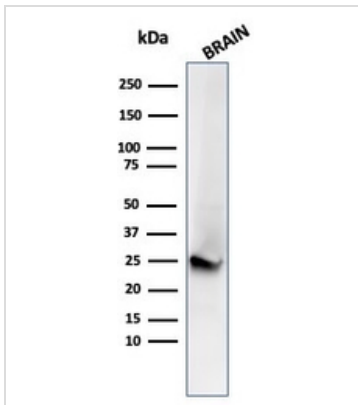
Purchasers shall not, and agree not to enable third parties to, analyze, copy, reverse engineer or otherwise attempt to determine the structure or sequence of the product.

DATA IMAGES



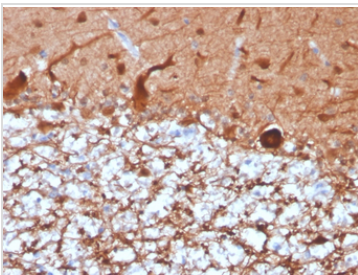
GTX02737 IHC-P Image

IHC-P analysis of human cerebellum tissue section using GTX02737 PGP9.5 antibody [UCLH1/4556R].



GTX02737 WB Image

WB analysis of human brain tissue lysate using GTX02737 PGP9.5 antibody [UCLH1/4556R].



GTX02737 IHC-P Image

IHC-P analysis of human cerebellum tissue section using GTX02737 PGP9.5 antibody [UCLH1/4556R].



For full product information, images and publications, please visit our [website](#).