

S100A8 + S100A9 antibody [rMAC3781]

Cat. No. GTX02752

Host	Mouse
Clonality	Monoclonal
Isotype	IgG1
Application	IHC-P
Reactivity	Human, Mouse, Rat, Rabbit, Goat, Bovine, Cat, Dog, Guinea pig, Pig, Monkey, Baboon, Horse

Package
100 µg

APPLICATION

Application Note

*Optimal dilutions/concentrations should be determined by the researcher.

Suggested dilution	Recommended dilution
IHC-P	1-2 µg/ml
Note : Staining of formalin-fixed tissues requires heating tissue sections in 10mM Tris buffer with 1mM EDTA (pH 9.0) for 45 min at 95°C followed by cooling at RT for 20 minutes.	

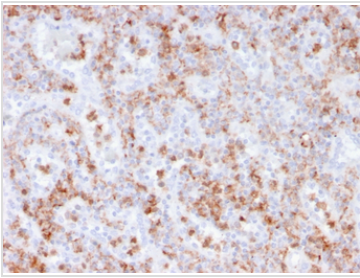
Not tested in other applications.

PROPERTIES

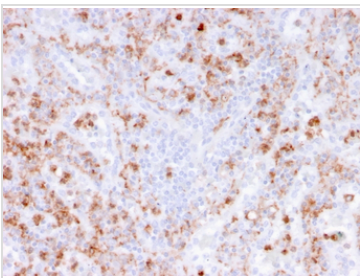
Form	Liquid
Buffer	PBS, 0.05% BSA
Preservative	0.05% Sodium azide
Storage	Store as concentrated solution. Centrifuge briefly prior to opening vial. Store at 4°C.
Concentration	200 µg/ml (Please refer to the vial label for the specific concentration.)
Immunogen	Affinity Purified human monocyte membrane preparation
Purification	Protein A/G purified
Conjugation	Unconjugated
Note	For laboratory research use only. Not for any clinical, therapeutic, or diagnostic use in humans or animals. Not for animal or human consumption. Purchasers shall not, and agree not to enable third parties to, analyze, copy, reverse engineer or otherwise attempt to determine the structure or sequence of the product.



For full product information, images and publications, please visit our [website](https://www.genetex.com).

DATA IMAGES

GTX02752 IHC-P Image

IHC-P analysis of human spleen tissue section using GTX02752 S100A8 + S100A9 antibody [rMAC3781].


GTX02752 IHC-P Image

IHC-P analysis of human spleen tissue section using GTX02752 S100A8 + S100A9 antibody [rMAC3781].



For full product information, images and publications, please visit our [website](#).