

MUC3 antibody [MUC3/2992R]

Cat. No. GTX02755

Host	Rabbit
Clonality	Monoclonal
Isotype	IgG
Applications	IHC-P
Reactivity	Human

Package
100 µg

Applications

Application Note

*Optimal dilutions/concentrations should be determined by the researcher.

Suggested dilution

IHC-P

Recommended dilution

1-2 µg/ml

Note : Staining of formalin-fixed tissues requires heating tissue sections in 10mM Tris buffer with 1mM EDTA (pH 9.0) for 45 min at 95°C followed by cooling at RT for 20 minutes.

Not tested in other applications.

Product Note

Its epitope localizes between amino acid SITTE. This antibody shows no cross-reaction with human milk fat globule membranes, MUC1, or MUC2.

Properties

Form Liquid

Buffer PBS, 0.05% BSA

Preservative 0.05% Sodium azide

Storage Store as concentrated solution. Centrifuge briefly prior to opening vial. Store at 4°C.

Concentration 200 µg/ml (Please refer to the vial label for the specific concentration.)

Immunogen A synthetic peptide of 35 amino acids, SIB35 (C-HSTPSFTSSITTETTSHSTPSFTSSITTETTS), which contains two of the human MUC3 tandem repeats, coupled to KLH.

Purification Protein A/G purified

Conjugation Unconjugated

Note

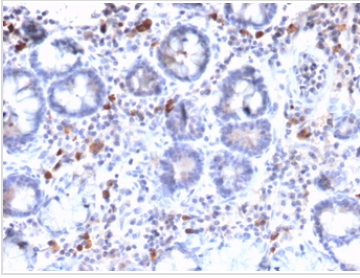
For laboratory research use only. Not for any clinical, therapeutic, or diagnostic use in humans or animals. Not for animal or human consumption.

Purchasers shall not, and agree not to enable third parties to, analyze, copy, reverse engineer or otherwise attempt to determine the structure or sequence of the product.



For full product information, images and publications, please visit our [website](#).

DATA IMAGES

**GTX02755 IHC-P Image**

IHC-P analysis of human gastric carcinoma section using GTX02755 MUC3 antibody [MUC3/2992R].



For full product information, images and publications, please visit our [website](#).