

MHC Class II antibody [HLA-Pan/2967R]

Cat. No. GTX02758

Host	Rabbit
Clonality	Monoclonal
Isotype	IgG
Applications	WB, ICC/IF, IHC-P, FCM, ELISA, Protein Array
Reactivity	Human

Package
100 µg

Applications

Application Note

*Optimal dilutions/concentrations should be determined by the researcher.

Suggested dilution	Recommended dilution
WB	1-2 µg/ml
ICC/IF	1-2 µg/ml
IHC-P	1-2 µg/ml
FCM	1-2 µg/million cells
ELISA	2-5 µg/ml (for coating)
Protein Array	Assay dependent

Note : Staining of formalin-fixed tissues requires heating tissue sections in 10mM Tris buffer with 1mM EDTA (pH 9.0) for 45 min at 95°C followed by cooling at RT for 20 minutes.

For ELISA coating, recommend using BSA-free format (please contact us for PBS only format).

Not tested in other applications.

Observed MW (kDa) 33-35 kDa. The observed M.W. is based on the following publication. PMID: 9931307

Product Note It reacts with a common epitope of human major histocompatibility (MHC) class II antigens, HLA-DP, -DQ and -DR.

Properties

Form	Liquid
Buffer	PBS, 0.05% BSA
Preservative	0.05% Sodium azide
Storage	Store as concentrated solution. Centrifuge briefly prior to opening vial. Store at 4°C.
Concentration	200 µg/ml (Please refer to the vial label for the specific concentration.)
Immunogen	Non-T, non-B human acute lymphoblastic leukemia REH6 cell line
Purification	Protein A/G purified



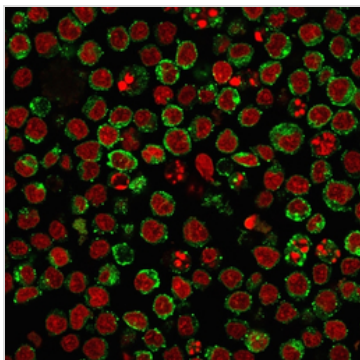
For full product information, images and publications, please visit our [website](#).

Conjugation Unconjugated

For laboratory research use only. Not for any clinical, therapeutic, or diagnostic use in humans or animals. Not for animal or human consumption.

Note Purchasers shall not, and agree not to enable third parties to, analyze, copy, reverse engineer or otherwise attempt to determine the structure or sequence of the product.

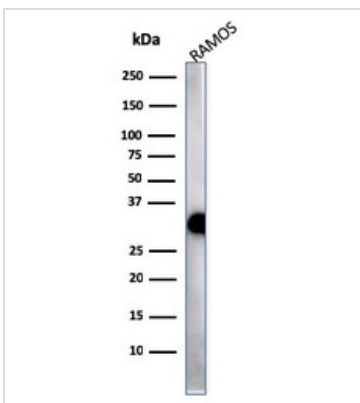
DATA IMAGES



GTX02758 ICC/IF Image

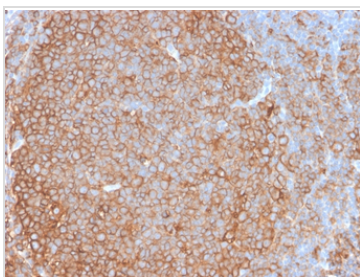
ICC/IF analysis of PFA fixed Ramos cells using GTX02758 MHC Class II antibody [HLA-Pan/2967R].

Green : Primary antibody
Red : nuclear counterstain



GTX02758 WB Image

WB analysis of Ramos whole cell lysate using GTX02758 MHC Class II antibody [HLA-Pan/2967R].



GTX02758 IHC-P Image

IHC-P analysis of human tonsil tissue section using GTX02758 MHC Class II antibody [HLA-Pan/2967R].



For full product information, images and publications, please visit our [website](#).