

## Biotin antibody [BTN/2032R]

Cat. No. GTX02761

Host	Rabbit
Clonality	Monoclonal
Isotype	IgG
Applications	IHC-P
Reactivity	Species independent

Package  
100 µg

## Applications

## Application Note

\*Optimal dilutions/concentrations should be determined by the researcher.

Suggested dilution	Recommended dilution
--------------------	----------------------

IHC-P	1-2 µg/ml
-------	-----------

Not tested in other applications.

**Product Note** This antibody is highly specific to biotin and shows no cross-reaction with other structurally related compounds.

## Properties

Form	Liquid
Buffer	PBS, 0.05% BSA
Preservative	0.05% Sodium azide
Storage	Store as concentrated solution. Centrifuge briefly prior to opening vial. Store at 4°C.
Concentration	200 µg/ml (Please refer to the vial label for the specific concentration.)
Immunogen	Biotinylated sheep immunoglobulin
Purification	Protein A purified
Conjugation	Unconjugated

## Note

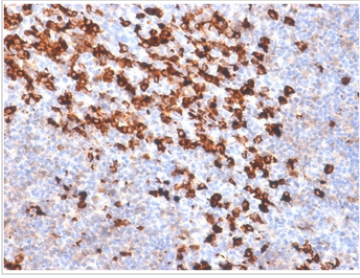
For laboratory research use only. Not for any clinical, therapeutic, or diagnostic use in humans or animals. Not for animal or human consumption.

Purchasers shall not, and agree not to enable third parties to, analyze, copy, reverse engineer or otherwise attempt to determine the structure or sequence of the product.



For full product information, images and publications, please visit our [website](#).

## DATA IMAGES

**GTX02761 IHC-P Image**

IHC-P analysis of human tonsil tissue section using GTX02761 Biotin antibody [BTN/2032R].



For full product information, images and publications, please visit our [website](#).