

SARS-CoV-2 (COVID-19) Spike (ECD) Protein, His tag (active)

Cat. No. GTX02774-pro

Application	Functional Assay
Species	SARS Coronavirus 2

Reference (2)
Package
100 µg

APPLICATION

Application Note

Binding assay: Measured by its binding ability in a functional ELISA. Immobilized SARS-CoV-2 (COVID-19) Spike Protein at 2µg/ml (100 µl/well) can bind recombinant human ACE2 protein with a linear range of 0.15-3.72 ng/mL.

Observed MW 180 kDa.

PROPERTIES

Form	Liquid
Buffer	PBS
Preservative	No preservative
Storage	Store as concentrated solution. Centrifuge briefly prior to opening vial. For short-term storage (1-2 weeks), store at 4°C. For long-term storage, aliquot and store at -20°C or below. Avoid multiple freeze-thaw cycles.
Concentration	Batch dependent (Please refer to the vial label for the specific concentration.)
Region/Sequence	C-terminal 6 x His tagged ; Val11-Gln1208 (S1 + S2 extracellular domain) of SARS-COV-2 spike protein (Accession #YP_009724390.1).
Expression System	HEK293 cells
Purity	> 95% by SDS-PAGE
Endotoxin	< 0.1 EU / µg (Determined by LAL assay)
Conjugation	Unconjugated

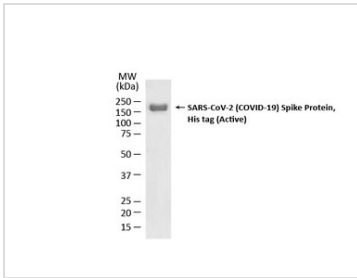
Note

For laboratory research use only. Not for any clinical, therapeutic, or diagnostic use in humans or animals. Not for animal or human consumption.

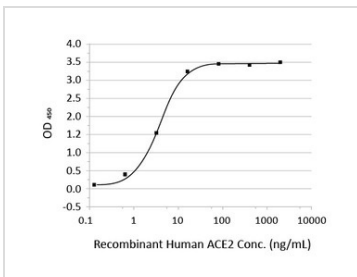
Purchasers shall not, and agree not to enable third parties to, analyze, copy, reverse engineer or otherwise attempt to determine the structure or sequence of the product.



For full product information, images and publications, please visit our [website](#).

DATA IMAGES

GTX02774-pro Image

SDS-PAGE analysis of GTX02774-pro SARS-CoV-2 (COVID-19) Spike (ECD) Protein, His tag (active).


GTX02774-pro Functional Assay Image

Functional ELISA analysis of immobilized GTX02774-pro SARS-CoV-2 (COVID-19) Spike (ECD) Protein, His tag (active) at 2µg/mL (100 µl/well) can bind recombinant human ACE2 protein with a linear range of 0.15-3.72 ng/mL.



For full product information, images and publications, please visit our [website](https://www.genetex.com).