

Interferon gamma Receptor 1 antibody

Cat. No. GTX02780

Host	Rabbit
Clonality	Polyclonal
Isotype	IgG
Applications	WB, ICC/IF, IHC-Fr, FCM
Reactivity	Human

Package
100 µg

Applications

Application Note

*Optimal dilutions/concentrations should be determined by the researcher.

Suggested dilution	Recommended dilution
WB	0.1-0.5µg/ml
ICC/IF	0.5-1µg/ml
IHC-Fr	0.5-1µg/ml
FCM	1-3µg/1x10 ⁶ cells

Not tested in other applications.

Calculated MW 54 kDa. ([Note](#))

Properties

Form	Liquid
Buffer	4mg Trehalose, 0.9mg NaCl, 0.2mg Na ₂ HPO ₄
Preservative	0.05mg Sodium azide
Storage	Store as concentrated solution. Centrifuge briefly prior to opening vial. For short-term storage (1-2 weeks), store at 4°C. For long-term storage, aliquot and store at -20°C or below. Avoid multiple freeze-thaw cycles.
Concentration	0.5 mg/ml (Please refer to the vial label for the specific concentration.)
Immunogen	A synthetic peptide corresponding to a sequence at the C-terminus of human IFNGR1 (443-484aa QELITVIKAPTSFGYDKPHVLVLLVDDSGKESLIGYRPTED), different from the related mouse sequence by seventeen amino acids.
Purification	Purified by antigen-affinity chromatography
Conjugation	Unconjugated



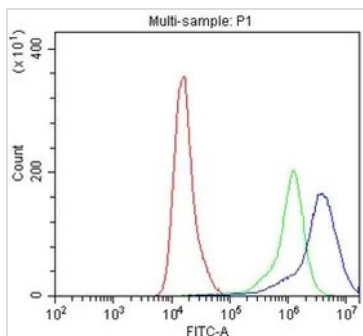
For full product information, images and publications, please visit our [website](#).

For laboratory research use only. Not for any clinical, therapeutic, or diagnostic use in humans or animals. Not for animal or human consumption.

Note

Purchasers shall not, and agree not to enable third parties to, analyze, copy, reverse engineer or otherwise attempt to determine the structure or sequence of the product.

DATA IMAGES



GTX02780 FCM Image

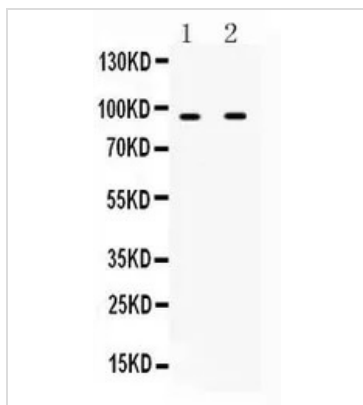
FACS analysis of A549 cells using GTX02780 Interferon gamma Receptor 1 antibody.

Blue : Primary antibody

Green : Isotype control

Red : Cell only control

Antibody amount : 1µg/1x10⁶ cells for 30 min at 20°C



GTX02780 WB Image

WB analysis of various cell lysates using GTX02780 Interferon gamma Receptor 1 antibody.

Lane 1 : HepG2 whole cell lysate

Lane 2 : SKOV3 whole cell lysate

Dilution : 0.5 µg/ml

Loading : 50µg



For full product information, images and publications, please visit our [website](#).