

Human APP beta (extracellular region) protein, His tag

Cat. No. GTX02797-pro**Species** Human**Package**

50 µg

Applications

Observed MW (kDa) ~95 kDa.

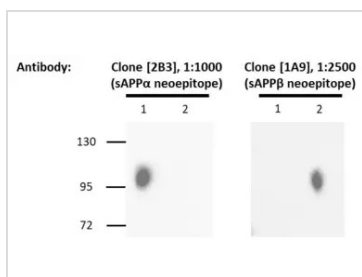
Properties

Form Liquid**Buffer** PBS, 20% Glycerol**Preservative** No preservatives**Storage** Store as concentrated solution. Centrifuge briefly prior to opening vial. For short-term storage (at least 1 month), store at 4°C. For long-term storage, aliquot and store at -20°C or below. Avoid multiple freeze-thaw cycles.**Concentration** batch dependent (Please refer to the vial label for the specific concentration.)**Region/Sequence** N-terminal 10 x His tagged ; 18-596 aa (Uniprot #P05067-4)**Expression System** HEK293 cells**Purity** > 95% by SDS-PAGE**Endotoxin** < 1 EU/µg (Determined by LAL assay)**Conjugation** Unconjugated**Note**

For laboratory research use only. Not for any clinical, therapeutic, or diagnostic use in humans or animals. Not for animal or human consumption.

Purchasers shall not, and agree not to enable third parties to, analyze, copy, reverse engineer or otherwise attempt to determine the structure or sequence of the product.

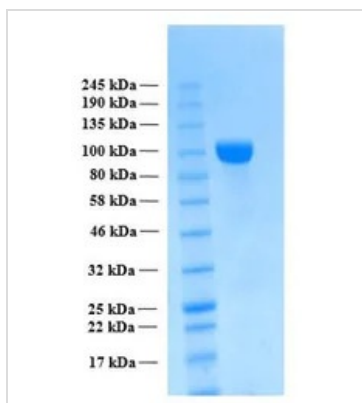
DATA IMAGES

**GTX02797-pro Image**

WB analysis of GTX02796-pro Human APP alpha (extracellular region) protein and GTX02797-pro Human APP beta (extracellular region) protein using APP alpha specific antibody (clone[2B3]) (left panel) or APP beta specific antibody (clone [1A9]) (right panel).



For full product information, images and publications, please visit our [website](https://www.genetex.com).



GTX02797-pro Image

SDS-PAGE of GTX02797-pro Human APP beta (extracellular region) protein.



For full product information, images and publications, please visit our [website](#).