

Matriptase / ST14 antibody [M24]

Cat. No. GTX02803

Host	Mouse
Clonality	Monoclonal
Isotype	IgG
Applications	WB, ICC/IF, IHC-P, IP
Reactivity	Human

References (1)

Package

100 µl

Applications

Application Note

*Optimal dilutions/concentrations should be determined by the researcher.

Suggested dilution	Recommended dilution
WB	1-5 µg/ml
ICC/IF	Assay dependent
IHC-P	Assay dependent
IP	Assay dependent

Note : For the best detection sensitivity, the samples should be treated under non-boiled and non-reducing conditions.

Not tested in other applications.

Calculated MW 95 kDa. ([Note](#))

Properties

Form	Liquid
Buffer	PBS, 50% Glycerol
Preservative	No preservatives
Storage	Store as concentrated solution. Centrifuge briefly prior to opening vial. For short-term storage (1-2 weeks), store at 4°C. For long-term storage, aliquot and store at -20°C or below. Avoid multiple freeze-thaw cycles.
Concentration	1 mg/ml (Please refer to the vial label for the specific concentration.)
Immunogen	Human native protein
Purification	Purified by protein A
Purity	>90% determined by SDS-PAGE
Conjugation	Unconjugated



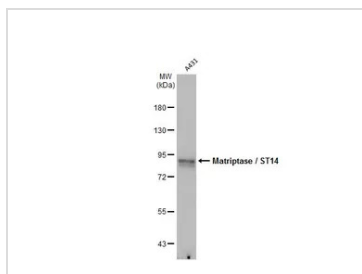
For full product information, images and publications, please visit our [website](#).

For laboratory research use only. Not for any clinical, therapeutic, or diagnostic use in humans or animals. Not for animal or human consumption.

Note

Purchasers shall not, and agree not to enable third parties to, analyze, copy, reverse engineer or otherwise attempt to determine the structure or sequence of the product.

DATA IMAGES

**GTX02803 WB Image**

Whole cell extract (30 μ g) was separated by 7.5% SDS-PAGE, and the membrane was blotted with Matriptase / ST14 antibody [M24] (GTX02803) diluted at 1:1000. The HRP-conjugated anti-mouse IgG antibody (GTX213111-01) was used to detect the primary antibody, and the signal was developed with Trident femto Western HRP Substrate.



For full product information, images and publications, please visit our [website](#).