

## Estrogen Receptor alpha antibody [SC1]

Cat. No. GTX02805

Host	Mouse
Clonality	Monoclonal
Isotype	IgG
Applications	WB, ICC/IF, IHC-P
Reactivity	Human, Mouse

Package  
100 µl

## Applications

## Application Note

\*Optimal dilutions/concentrations should be determined by the researcher.

Suggested dilution	Recommended dilution
WB	1-5 µg/ml
ICC/IF	Assay dependent
IHC-P	Assay dependent

Not tested in other applications.

Calculated MW	66 kDa. ( <a href="#">Note</a> )
Product Note	This antibody is specific for ER alpha protein, and it does not cross react with ER beta protein.

## Properties

Form	Liquid
Buffer	PBS, 50% Glycerol
Preservative	No preservatives
Storage	Store as concentrated solution. Centrifuge briefly prior to opening vial. For short-term storage (1-2 weeks), store at 4°C. For long-term storage, aliquot and store at -20°C or below. Avoid multiple freeze-thaw cycles.
Concentration	1 mg/ml (Please refer to the vial label for the specific concentration.)
Immunogen	Recombinant human protein expressed in mammalian cells
Purification	Purified by protein A
Purity	>90% determined by SDS-PAGE
Conjugation	Unconjugated

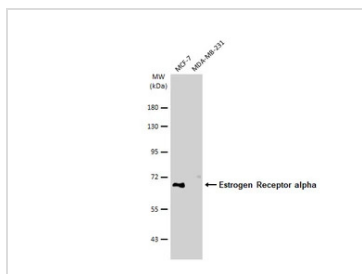


For full product information, images and publications, please visit our [website](#).

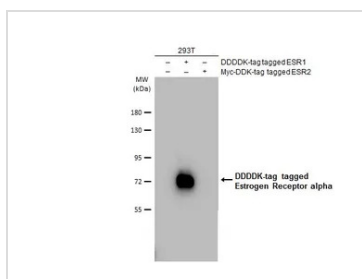
For laboratory research use only. Not for any clinical, therapeutic, or diagnostic use in humans or animals. Not for animal or human consumption.

**Note**

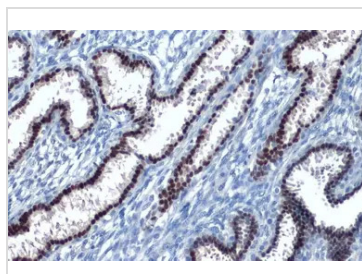
Purchasers shall not, and agree not to enable third parties to, analyze, copy, reverse engineer or otherwise attempt to determine the structure or sequence of the product.

**DATA IMAGES**

**GTx02805 WB Image**

Various whole cell extracts (30 µg) were separated by 7.5% SDS-PAGE, and the membrane was blotted with Estrogen Receptor alpha antibody [SC1] (GTx02805) diluted at 1:1000. The HRP-conjugated anti-mouse IgG antibody (GTx213111-01) was used to detect the primary antibody.


**GTx02805 WB Image**

Non-transfected (-) and transfected (+) 293T whole cell extracts (30 µg) were separated by 7.5% SDS-PAGE, and the membrane was blotted with Estrogen Receptor alpha antibody [SC1] (GTx02805) diluted at 1:50000. The HRP-conjugated anti-mouse IgG antibody (GTx213111-01) was used to detect the primary antibody.

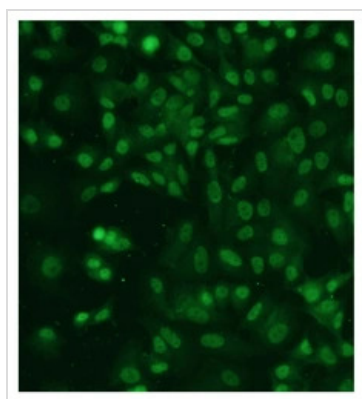

**GTx02805 IHC-P Image**

Estrogen Receptor alpha antibody [SC1] detects Estrogen Receptor alpha protein at nucleus by immunohistochemical analysis.

Sample: Paraffin-embedded human breast carcinoma.

Estrogen Receptor alpha stained by Estrogen Receptor alpha antibody [SC1] (GTx02805) diluted at 1:500.

Antigen Retrieval: Citrate buffer, pH 6.0, 15 min


**GTx02805 ICC/IF Image**

ICC/IF analysis of PFA fixed MCF-7 cells by using GTx02805 Estrogen Receptor alpha antibody [SC1].

Dilution : 1-2 µg/ml



For full product information, images and publications, please visit our [website](https://www.genetex.com).