

ZC3H12A antibody

Cat. No. GTX02811

| | |
|---------------------|------------|
| Host | Rabbit |
| Clonality | Polyclonal |
| Isotype | IgG |
| Applications | WB, IHC-P |
| Reactivity | Human |

Package
100 µl

Applications

Application Note

*Optimal dilutions/concentrations should be determined by the researcher.

| Suggested dilution | Recommended dilution |
|--------------------|----------------------|
| WB | 1:500-1:2000 |
| IHC-P | 1:50-1:200 |

Not tested in other applications.

Calculated MW 66 kDa. ([Note](#))

Properties

| | |
|----------------------|--|
| Form | Liquid |
| Buffer | PBS, 40% Glycerol |
| Preservative | 0.05% Sodium azide |
| Storage | Store as concentrated solution. Centrifuge briefly prior to opening vial. For short-term storage (1-2 weeks), store at 4°C. For long-term storage, aliquot and store at -20°C or below. Avoid multiple freeze-thaw cycles. |
| Concentration | 2 mg/ml (Please refer to the vial label for the specific concentration.) |
| Immunogen | Fusion protein corresponding to a region derived from internal residues of human zinc finger CCCH-type containing 12A |
| Purification | Purified by affinity chromatography |
| Conjugation | Unconjugated |

Note

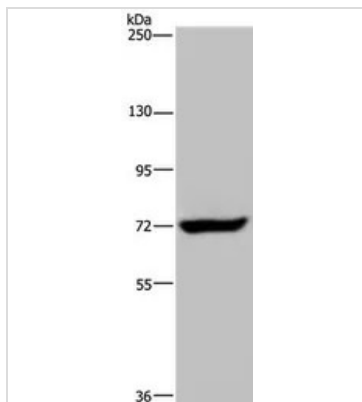
For laboratory research use only. Not for any clinical, therapeutic, or diagnostic use in humans or animals. Not for animal or human consumption.

Purchasers shall not, and agree not to enable third parties to, analyze, copy, reverse engineer or otherwise attempt to determine the structure or sequence of the product.



For full product information, images and publications, please visit our [website](#).

DATA IMAGES

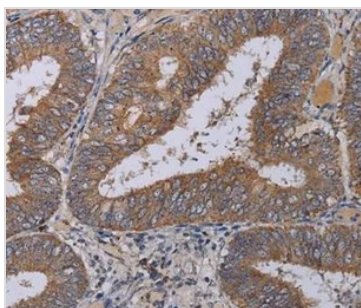


GTx02811 WB Image

WB analysis of K562 cell lysate using GTx02811 ZC3H12A antibody.

Loading : 40µg

Dilution : 1:200



GTx02811 IHC-P Image

IHC-P analysis of human colon cancer tissue using GTx02811 ZC3H12A antibody.

Dilution : 1:40



For full product information, images and publications, please visit our [website](#).