

ATF3 antibody [7F1B10]

Cat. No. GTX02812

Host	Mouse
Clonality	Monoclonal
Isotype	IgG1
Applications	WB, ICC/IF, FCM, ELISA
Reactivity	Human

Package
100 µl

Applications

Application Note

*Optimal dilutions/concentrations should be determined by the researcher.

Suggested dilution	Recommended dilution
WB	1:500-1:2000
ICC/IF	1:200-1:1000
FCM	1:200-1:400
ELISA	1:10000

Not tested in other applications.

Calculated MW 21 kDa. ([Note](#))

Properties

Form	Liquid
Buffer	PBS
Preservative	0.05% Sodium azide
Storage	Store as concentrated solution. Centrifuge briefly prior to opening vial. For short-term storage (1-2 weeks), store at 4°C. For long-term storage, aliquot and store at -20°C or below. Avoid multiple freeze-thaw cycles.
Concentration	1 mg/ml (Please refer to the vial label for the specific concentration.)
Immunogen	Purified recombinant fragment of human ATF3 (AA: 1-181) expressed in E.Coli.
Purification	Purified IgG1
Conjugation	Unconjugated

Note

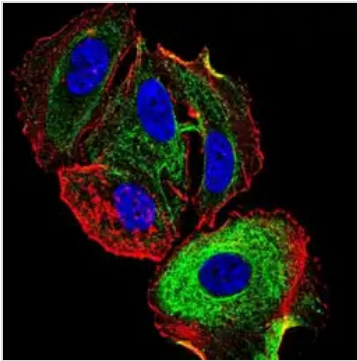
For laboratory research use only. Not for any clinical, therapeutic, or diagnostic use in humans or animals. Not for animal or human consumption.

Purchasers shall not, and agree not to enable third parties to, analyze, copy, reverse engineer or otherwise attempt to determine the structure or sequence of the product.



For full product information, images and publications, please visit our [website](#).

DATA IMAGES



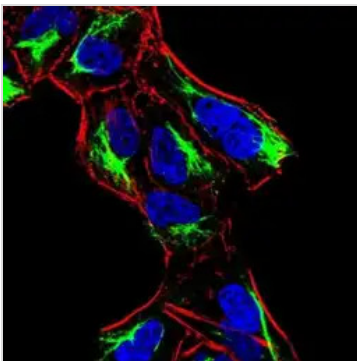
GTX02812 ICC/IF Image

ICC/IF analysis of MCF-7 cells using GTX02812 ATF3 antibody [7F1B10].

Green : Primary antibody

Blue : DRAQ5 fluorescent DNA dye

Red : Actin filaments



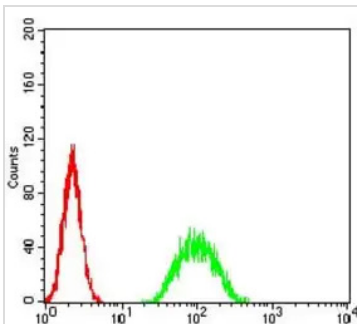
GTX02812 ICC/IF Image

ICC/IF analysis of HeLa cells using GTX02812 ATF3 antibody [7F1B10].

Green : Primary antibody

Blue : DRAQ5 fluorescent DNA dye

Red : Actin filaments

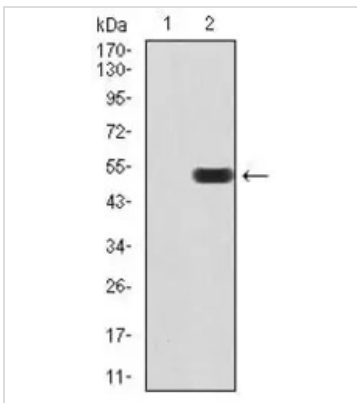


GTX02812 FCM Image

FACS analysis of A549 cells using GTX02812 ATF3 antibody [7F1B10].

Green : Primary antibody

Red : Negative control



GTX02812 WB Image

WB analysis of HEK293 (Lane 1) and ATF3 (AA: 1-181)-hlgGfC transfected HEK293 (Lane 2) cell lysate using GTX02812 ATF3 antibody [7F1B10].



For full product information, images and publications, please visit our [website](https://www.genetex.com).