

Insulin antibody [GT1229]

Cat. No. GTX02826

Host	Rabbit
Clonality	Monoclonal
Isotype	IgG
Applications	WB, IHC-P
Reactivity	Mouse, Rat

Package
100 µl

Applications

Application Note

*Optimal dilutions/concentrations should be determined by the researcher.

Suggested dilution	Recommended dilution
WB	1:500 - 1:2000
IHC-P	1:50 - 1:200

Not tested in other applications.

Calculated MW 12 kDa. ([Note](#))

Properties

Form	Liquid
Buffer	PBS, 0.05% BSA, 50% Glycerol
Preservative	0.02% Sodium azide
Storage	Store as concentrated solution. Centrifuge briefly prior to opening vial. For short-term storage (1-2 weeks), store at 4°C. For long-term storage, we recommend adding 50% glycerol, then aliquot and store at -20°C or below. Avoid multiple freeze-thaw cycles.
Concentration	0.61 mg/ml (Please refer to the vial label for the specific concentration.)
Immunogen	A synthesized peptide derived from human Insulin
Purification	Purified by antigen-affinity chromatography
Conjugation	Unconjugated

Note

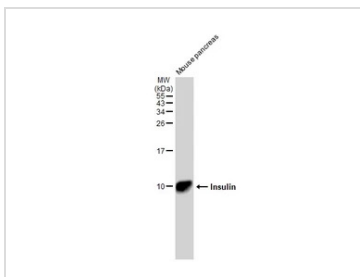
For laboratory research use only. Not for any clinical, therapeutic, or diagnostic use in humans or animals. Not for animal or human consumption.

Purchasers shall not, and agree not to enable third parties to, analyze, copy, reverse engineer or otherwise attempt to determine the structure or sequence of the product.



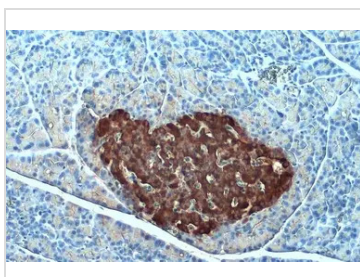
For full product information, images and publications, please visit our [website](#).

DATA IMAGES



GTX02826 WB Image

Mouse tissue extract (50 µg) was separated by 15% SDS-PAGE, and the membrane was blotted with Insulin antibody [GT1229] (GTX02826) diluted at 1:1000. The HRP-conjugated anti-rabbit IgG antibody (GTX213110-01) was used to detect the primary antibody.

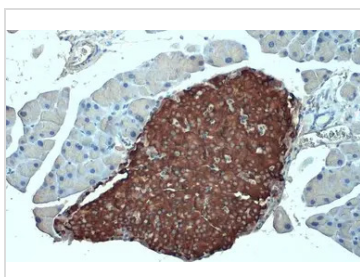


GTX02826 IHC-P Image

Insulin antibody [GT1229] detects Insulin protein at cytoplasm by immunohistochemical analysis. Sample: Paraffin-embedded rat pancreas.

Insulin stained by Insulin antibody [GT1229] (GTX02826) diluted at 1:500.

Antigen Retrieval: Citrate buffer, pH 6.0, 15 min

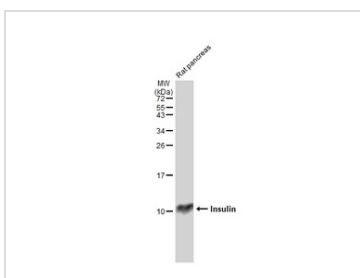


GTX02826 IHC-P Image

Insulin antibody [GT1229] detects Insulin protein at cytoplasm by immunohistochemical analysis. Sample: Paraffin-embedded mouse pancreas.

Insulin stained by Insulin antibody [GT1229] (GTX02826) diluted at 1:500.

Antigen Retrieval: Citrate buffer, pH 6.0, 15 min



GTX02826 WB Image

Rat tissue extract (50 µg) was separated by 15% SDS-PAGE, and the membrane was blotted with Insulin antibody [GT1229] (GTX02826) diluted at 1:1000. The HRP-conjugated anti-rabbit IgG antibody (GTX213110-01) was used to detect the primary antibody.



For full product information, images and publications, please visit our [website](https://www.genetex.com).