

Leptin Receptor antibody [GT1233]

Cat. No. GTX02830

Host	Rabbit
Clonality	Monoclonal
Isotype	IgG
Applications	WB, IHC-P
Reactivity	Human, Mouse, Rat

References (1)

Package

100 µl

Applications

Application Note

*Optimal dilutions/concentrations should be determined by the researcher.

Suggested dilution	Recommended dilution
WB	1:500 - 1:2000
IHC-P	1:50 - 1:200

Not tested in other applications.

Calculated MW 132 kDa. ([Note](#))

Properties

Form	Liquid
Buffer	PBS, 0.05% BSA, 50% Glycerol
Preservative	0.02% Sodium azide
Storage	Store as concentrated solution. Centrifuge briefly prior to opening vial. For short-term storage (1-2 weeks), store at 4°C. For long-term storage, we recommend adding 50% glycerol, then aliquot and store at -20°C or below. Avoid multiple freeze-thaw cycles.
Concentration	0.33 mg/ml (Please refer to the vial label for the specific concentration.)
Immunogen	A synthesized peptide derived from human Leptin Receptor
Purification	Purified by antigen-affinity chromatography
Conjugation	Unconjugated

Note

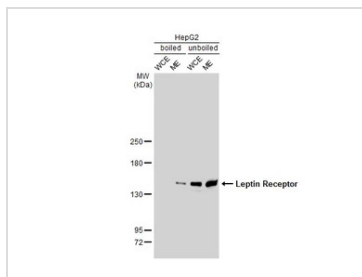
For laboratory research use only. Not for any clinical, therapeutic, or diagnostic use in humans or animals. Not for animal or human consumption.

Purchasers shall not, and agree not to enable third parties to, analyze, copy, reverse engineer or otherwise attempt to determine the structure or sequence of the product.



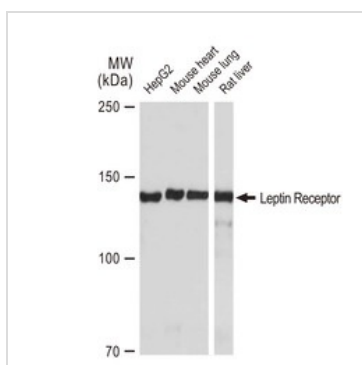
For full product information, images and publications, please visit our [website](#).

DATA IMAGES



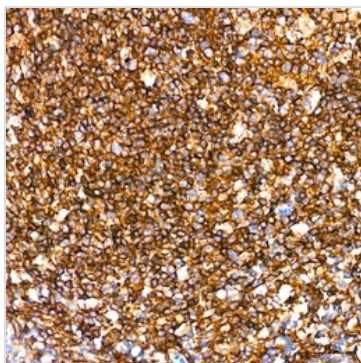
GTX02830 WB Image

Boiled and unboiled HepG2 whole cell and membrane extracts (30 µg) were separated by 5% SDS-PAGE, and the membrane was blotted with Leptin Receptor antibody [GT1233] (GTX02830) diluted at 1:500. The HRP-conjugated anti-rabbit IgG antibody (GTX213110-01) was used to detect the primary antibody. (WCE: whole cell extract; ME: membrane extract)



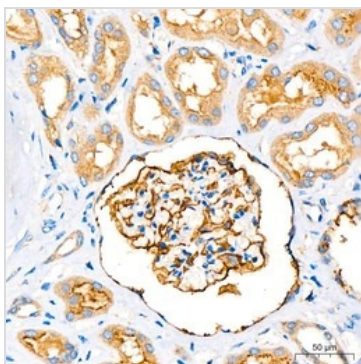
GTX02830 WB Image

WB analysis of various samples using GTX02830 Leptin Receptor antibody [GT1233].
Dilution : 1:1000
Loading : 25µg



GTX02830 IHC-P Image

IHC-P analysis of human tonsil tissue section using GTX02830 Leptin Receptor antibody [GT1233].
Antigen retrieval: high pressure antigen retrieval with 10 mM citrate buffer pH 6.0
Dilution : 1:200



GTX02830 IHC-P Image

IHC-P analysis of human kidney tissue section using GTX02830 Leptin Receptor antibody [GT1233].
Antigen retrieval : high pressure antigen retrieval with 10 mM citrate buffer pH 6.0
Dilution : 1:200



For full product information, images and publications, please visit our [website](https://www.genetex.com).