

## Hemoglobin alpha antibody [GT1234]

Cat. No. GTX02831

Host	Rabbit
Clonality	Monoclonal
Isotype	IgG
Applications	WB, IHC-P
Reactivity	Human, Mouse, Rat

Package  
100 µl

## Applications

## Application Note

\*Optimal dilutions/concentrations should be determined by the researcher.

Suggested dilution	Recommended dilution
WB	1:500 - 1:2000
IHC-P	1:50 - 1:200

Not tested in other applications.

Calculated MW 15 kDa. ( [Note](#) )

## Properties

Form	Liquid
Buffer	PBS, 0.05% BSA, 50% Glycerol
Preservative	0.02% Sodium azide
Storage	Store as concentrated solution. Centrifuge briefly prior to opening vial. For short-term storage (1-2 weeks), store at 4°C. For long-term storage, we recommend adding 50% glycerol, then aliquot and store at -20°C or below. Avoid multiple freeze-thaw cycles.
Concentration	1 mg/ml (Please refer to the vial label for the specific concentration.)
Immunogen	A synthesized peptide derived from human Hemoglobin subunit alpha
Purification	Purified by antigen-affinity chromatography
Conjugation	Unconjugated

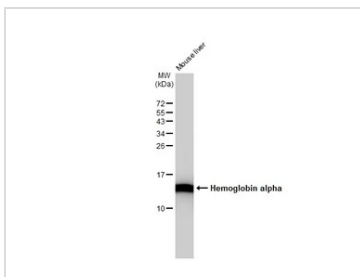
## Note

For laboratory research use only. Not for any clinical, therapeutic, or diagnostic use in humans or animals. Not for animal or human consumption.

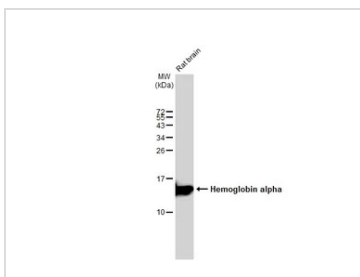
Purchasers shall not, and agree not to enable third parties to, analyze, copy, reverse engineer or otherwise attempt to determine the structure or sequence of the product.



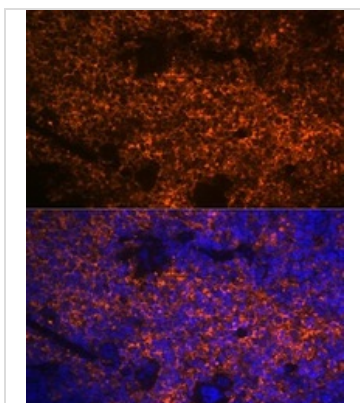
For full product information, images and publications, please visit our [website](#).

**DATA IMAGES**

**GTX02831 WB Image**

Mouse tissue extract (50 µg) was separated by 15% SDS-PAGE, and the membrane was blotted with Hemoglobin alpha [GT1234] (GTX02831) diluted at 1:50000. The HRP-conjugated anti-rabbit IgG antibody (GTX213110-01) was used to detect the primary antibody.


**GTX02831 WB Image**

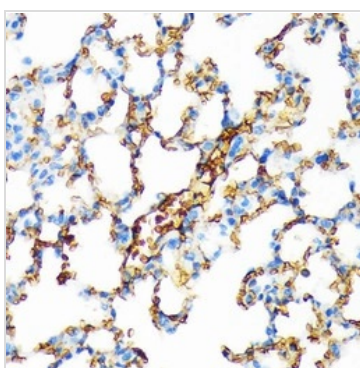
Rat tissue extract (50 µg) was separated by 15% SDS-PAGE, and the membrane was blotted with Hemoglobin alpha [GT1234] (GTX02831) diluted at 1:50000. The HRP-conjugated anti-rabbit IgG antibody (GTX213110-01) was used to detect the primary antibody.


**GTX02831 IHC-P Image**

IHC-P analysis of mouse spleen tissue section using Hemoglobin alpha [GT1234] Hemoglobin alpha [GT1234].

Dilution : 1:100

Blue : DAPI for nuclear staining.


**GTX02831 IHC-P Image**

IHC-P analysis of mouse lung tissue section using GTX02831 Hemoglobin alpha [GT1234].

Dilution : 1:100



For full product information, images and publications, please visit our [website](https://www.genetex.com).