

## GluT1 antibody [GT1235]

Cat. No. GTX02832

<b>Host</b>	Rabbit
<b>Clonality</b>	Monoclonal
<b>Isotype</b>	IgG
<b>Applications</b>	WB, IHC-P
<b>Reactivity</b>	Human, Mouse, Rat

Package  
100 µl

## Applications

## Application Note

\*Optimal dilutions/concentrations should be determined by the researcher.

Suggested dilution	Recommended dilution
WB	1:500 - 1:2000
IHC-P	Assay dependent

Not tested in other applications.

**Calculated MW** 54 kDa. ([Note](#))

**Observed MW (kDa)** > 43 kDa. The observed M.W. is based on the following publication. PMID: 18358815

## Properties

<b>Form</b>	Liquid
<b>Buffer</b>	PBS, 0.05% BSA, 50% Glycerol
<b>Preservative</b>	0.02% Sodium azide
<b>Storage</b>	Store as concentrated solution. Centrifuge briefly prior to opening vial. For short-term storage (1-2 weeks), store at 4°C. For long-term storage, we recommend adding 50% glycerol, then aliquot and store at -20°C or below. Avoid multiple freeze-thaw cycles.
<b>Concentration</b>	0.5 mg/ml (Please refer to the vial label for the specific concentration.)
<b>Immunogen</b>	A synthesized peptide derived from human GLUT1
<b>Purification</b>	Purified by antigen-affinity chromatography
<b>Conjugation</b>	Unconjugated

## Note

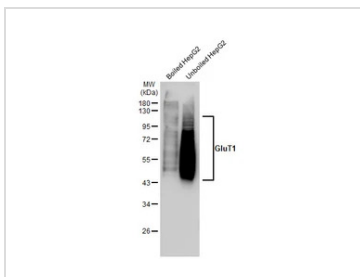
For laboratory research use only. Not for any clinical, therapeutic, or diagnostic use in humans or animals. Not for animal or human consumption.

Purchasers shall not, and agree not to enable third parties to, analyze, copy, reverse engineer or otherwise attempt to determine the structure or sequence of the product.

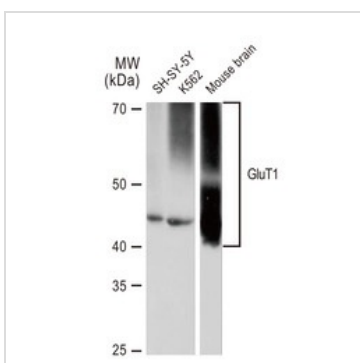


For full product information, images and publications, please visit our [website](#).

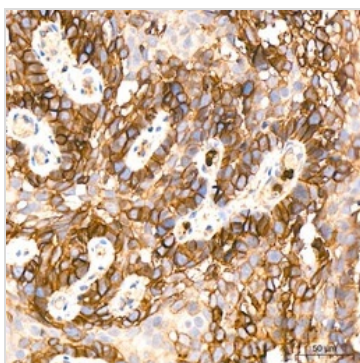
## DATA IMAGES

**GTX02832 WB Image**

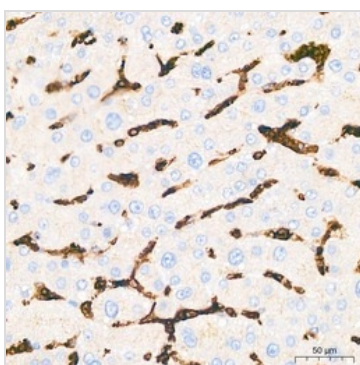
Boiled and unboiled HepG2 whole cell extracts (30  $\mu$ g) were separated by 10% SDS-PAGE, and the membrane was blotted with GluT1 antibody [GT1235] (GTX02832) diluted at 1:1000. The HRP-conjugated anti-rabbit IgG antibody (GTX213110-01) was used to detect the primary antibody. The observed M.W. is based on the publication: PMID: 18358815

**GTX02832 WB Image**

WB analysis of various samples using GTX02832 GluT1 antibody [GT1235].  
Dilution : 1:1000  
Loading : 25 $\mu$ g

**GTX02832 IHC-P Image**

IHC-P analysis of human cervix cancer tissue section GTX02832 GluT1 antibody [GT1235].br>Antigen retrieval : high pressure antigen retrieval with 10 mM citrate buffer pH 6.0.  
Dilution : 1:200

**GTX02832 IHC-P Image**

IHC-P analysis of human liver tissue section using GTX02832 GluT1 antibody [GT1235].  
Antigen retrieval : high pressure antigen retrieval with 10 mM citrate buffer pH 6.0.  
Dilution : 1:200



For full product information, images and publications, please visit our [website](http://www.genetex.com).