

## Integrin alpha 2 antibody [GT1238]

Cat. No. GTX02835

Host	Rabbit
Clonality	Monoclonal
Isotype	IgG
Applications	WB, IHC-P
Reactivity	Human, Mouse, Rat

References ( 1 )

Package

100 µl

## Applications

## Application Note

\*Optimal dilutions/concentrations should be determined by the researcher.

Suggested dilution	Recommended dilution
WB	1:500 - 1:2000
IHC-P	1:50 - 1:200

Not tested in other applications.

Calculated MW	129 kDa. ( <a href="#">Note</a> )
Observed MW (kDa)	150-160 kDa. The observed M.W. is based on the following publication. PMID: 19411307 18787945

## Properties

Form	Liquid
Buffer	PBS, 0.05% BSA, 50% Glycerol
Preservative	0.02% Sodium azide
Storage	Store as concentrated solution. Centrifuge briefly prior to opening vial. For short-term storage (1-2 weeks), store at 4°C. For long-term storage, we recommend adding 50% glycerol, then aliquot and store at -20°C or below. Avoid multiple freeze-thaw cycles.
Concentration	0.45 mg/ml (Please refer to the vial label for the specific concentration.)
Immunogen	A synthesized peptide derived from human Integrin alpha 2
Purification	Purified by antigen-affinity chromatography
Conjugation	Unconjugated

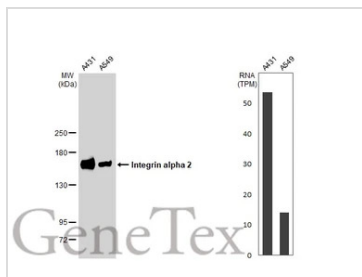
## Note

For laboratory research use only. Not for any clinical, therapeutic, or diagnostic use in humans or animals. Not for animal or human consumption.

Purchasers shall not, and agree not to enable third parties to, analyze, copy, reverse engineer or otherwise attempt to determine the structure or sequence of the product.

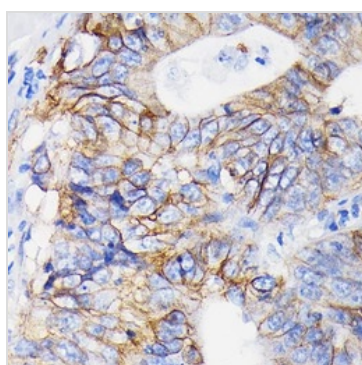


For full product information, images and publications, please visit our [website](#).

**DATA IMAGES**

**GTX02835 WB Image**

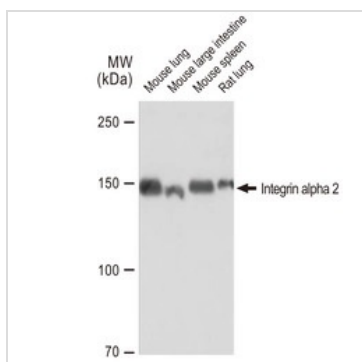
Various whole cell extracts (30 µg) were separated by 5% SDS-PAGE, and the membrane was blotted with Integrin alpha 2 antibody [GT1238] (GTX02835) diluted at 1:1000. The HRP-conjugated anti-rabbit IgG antibody (GTX213110-01) was used to detect the primary antibody. Corresponding RNA expression data for the same cell lines are based on Human Protein Atlas program.

The observed M.W. is based on the publication: PMID: 19411307 and PMID: 18787945


**GTX02835 IHC-P Image**

IHC-P analysis of human colon carcinoma section using GTX02835 Integrin alpha 2 antibody [GT1238].

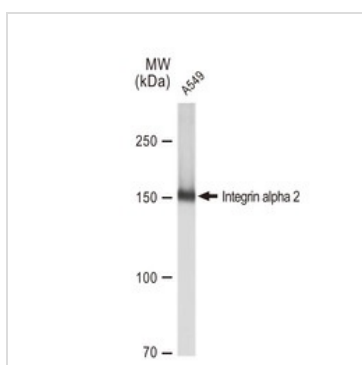
Dilution : 1:100


**GTX02835 WB Image**

WB analysis of various samples using GTX02835 Integrin alpha 2 antibody [GT1238].

Dilution : 1:1000

Loading : 25µg


**GTX02835 WB Image**

WB analysis of A549 whole cell lysate using GTX02835 Integrin alpha 2 antibody [GT1238].

Dilution : 1:1000

Loading : 25µg



For full product information, images and publications, please visit our [website](https://www.genetex.com).