

STAT4 antibody [GT1244]

Cat. No. GTX02841

Host	Rabbit
Clonality	Monoclonal
Isotype	IgG
Application	WB, ICC/IF
Reactivity	Human, Mouse, Rat

Package
100 µl

APPLICATION

Application Note

*Optimal dilutions/concentrations should be determined by the researcher.

Suggested dilution	Recommended dilution
WB	1:500 - 1:2000
ICC/IF	1:50 - 1:200

Not tested in other applications.

Calculated MW 86 kDa. ([Note](#))

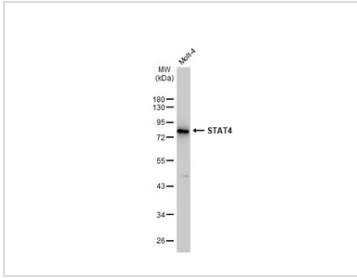
PROPERTIES

Form	Liquid
Buffer	PBS, 0.05% BSA, 50% Glycerol
Preservative	0.02% Sodium azide
Storage	Store as concentrated solution. Centrifuge briefly prior to opening vial. For short-term storage (1-2 weeks), store at 4°C. For long-term storage, we recommend adding 50% glycerol, then aliquot and store at -20°C or below. Avoid multiple freeze-thaw cycles.
Concentration	1.05 mg/ml (Please refer to the vial label for the specific concentration.)
Immunogen	A synthesized peptide derived from human STAT4
Purification	Purified by antigen-affinity chromatography
Conjugation	Unconjugated
Note	<p>For laboratory research use only. Not for any clinical, therapeutic, or diagnostic use in humans or animals. Not for animal or human consumption.</p> <p>Purchasers shall not, and agree not to enable third parties to, analyze, copy, reverse engineer or otherwise attempt to determine the structure or sequence of the product.</p>



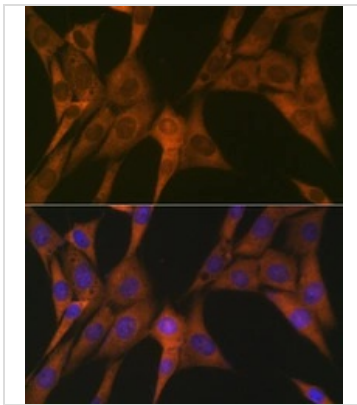
For full product information, images and publications, please visit our [website](#).

DATA IMAGES



GTx02841 WB Image

Whole cell extract (30 µg) was separated by 10% SDS-PAGE, and the membrane was blotted with STAT4 antibody [GT1244] (GTx02841) diluted at 1:1000. The HRP-conjugated anti-rabbit IgG antibody (GTx213110-01) was used to detect the primary antibody.

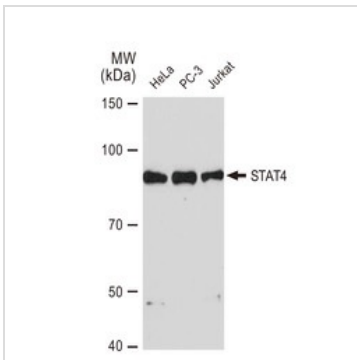


GTx02841 ICC/IF Image

ICC/IF analysis of NIH-3T3 cells using GTx02841 STAT4 antibody [GT1244].

Dilution : 1:100

Blue : DAPI for nuclear staining.

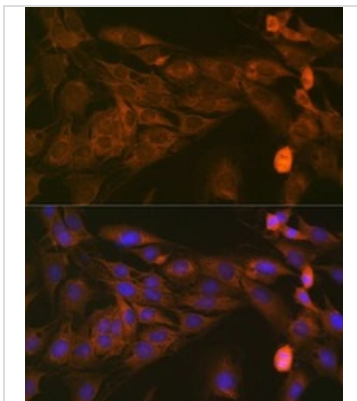


GTx02841 WB Image

WB analysis of various samples using GTx02841 STAT4 antibody [GT1244].

Dilution : 1:1000

Loading : 25µg



GTx02841 ICC/IF Image

ICC/IF analysis of C6 cells using GTx02841 STAT4 antibody [GT1244].

Dilution : 1:100

Blue : DAPI for nuclear staining.



For full product information, images and publications, please visit our [website](https://www.genetex.com).