

## SUMO2 + SUMO3 antibody [GT1253]

**Cat. No. GTX02850**

<b>Host</b>	Rabbit
<b>Clonality</b>	Monoclonal
<b>Isotype</b>	IgG
<b>Applications</b>	WB, ICC/IF, IHC-P
<b>Reactivity</b>	Human, Mouse, Rat

**Package**  
100 µl

## Applications

**Application Note**

\*Optimal dilutions/concentrations should be determined by the researcher.

Suggested dilution	Recommended dilution
WB	1:500 - 1:2000
ICC/IF	1:50 - 1:200
IHC-P	1:50 - 1:200

Not tested in other applications.

## Properties

<b>Form</b>	Liquid
<b>Buffer</b>	PBS, 0.05% BSA, 50% Glycerol
<b>Preservative</b>	0.02% Sodium azide
<b>Storage</b>	Store as concentrated solution. Centrifuge briefly prior to opening vial. For short-term storage (1-2 weeks), store at 4°C. For long-term storage, we recommend adding 50% glycerol, then aliquot and store at -20°C or below. Avoid multiple freeze-thaw cycles.
<b>Concentration</b>	1.65 mg/ml (Please refer to the vial label for the specific concentration.)
<b>Immunogen</b>	A synthesized peptide derived from human Sumo2/3
<b>Purification</b>	Purified by antigen-affinity chromatography
<b>Conjugation</b>	Unconjugated

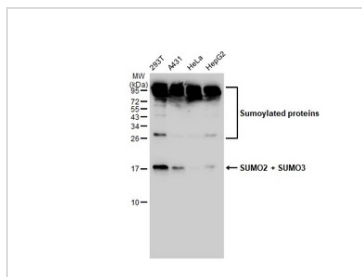
**Note** For laboratory research use only. Not for any clinical, therapeutic, or diagnostic use in humans or animals. Not for animal or human consumption.

Purchasers shall not, and agree not to enable third parties to, analyze, copy, reverse engineer or otherwise attempt to determine the structure or sequence of the product.

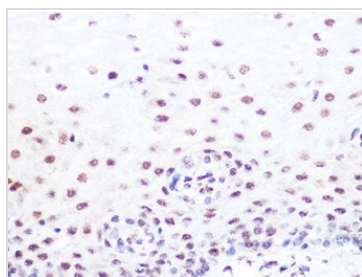


For full product information, images and publications, please visit our [website](#).

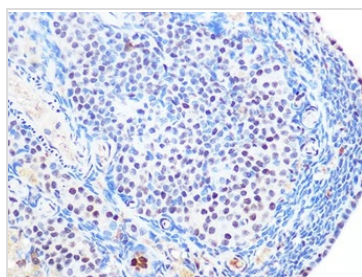
## DATA IMAGES

**GTX02850 WB Image**

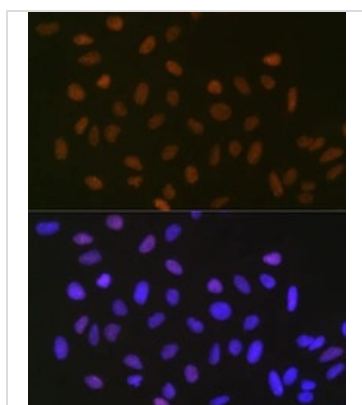
Various whole cell extracts (30 µg) were separated by 15% SDS-PAGE, and the membrane was blotted with SUMO2 + SUMO3 antibody [GT1253] (GTX02850) diluted at 1:1000. The HRP-conjugated anti-rabbit IgG antibody (GTX213110-01) was used to detect the primary antibody.

**GTX02850 IHC-P Image**

IHC-P analysis of human esophageal tissue section using GTX02850 SUMO2 + SUMO3 antibody [GT1253].  
Dilution : 1:100

**GTX02850 IHC-P Image**

IHC-P analysis of rat ovary tissue section using GTX02850 SUMO2 + SUMO3 antibody [GT1253].  
Dilution : 1:100

**GTX02850 ICC/IF Image**

ICC/IF analysis of U2OS cells using GTX02850 SUMO2 + SUMO3 antibody [GT1253].  
Dilution : 1:100  
Blue : DAPI for nuclear staining.



For full product information, images and publications, please visit our [website](http://www.genetex.com).