

ERK5 antibody [GT1258]

Cat. No. GTX02855

Host	Rabbit
Clonality	Monoclonal
Isotype	IgG
Applications	WB, IHC-P
Reactivity	Human, Mouse, Rat

Package
100 µl

Applications

Application Note

*Optimal dilutions/concentrations should be determined by the researcher.

Suggested dilution	Recommended dilution
WB	1:500 - 1:2000
IHC-P	1:50 - 1:200

Not tested in other applications.

Calculated MW	88 kDa. (Note)
Observed MW (kDa)	120 kDa. The observed M.W. is based on the following publication. PMID: 15692064

Properties

Form	Liquid
Buffer	PBS, 0.05% BSA, 50% Glycerol
Preservative	0.02% Sodium azide
Storage	Store as concentrated solution. Centrifuge briefly prior to opening vial. For short-term storage (1-2 weeks), store at 4°C. For long-term storage, we recommend adding 50% glycerol, then aliquot and store at -20°C or below. Avoid multiple freeze-thaw cycles.
Concentration	0.77 mg/ml (Please refer to the vial label for the specific concentration.)
Immunogen	A synthesized peptide derived from human ERK5
Purification	Purified by antigen-affinity chromatography
Conjugation	Unconjugated

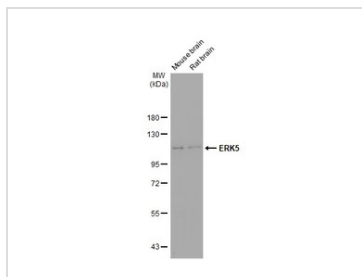
Note

For laboratory research use only. Not for any clinical, therapeutic, or diagnostic use in humans or animals. Not for animal or human consumption.

Purchasers shall not, and agree not to enable third parties to, analyze, copy, reverse engineer or otherwise attempt to determine the structure or sequence of the product.

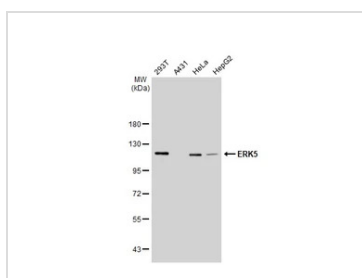


For full product information, images and publications, please visit our [website](#).

DATA IMAGES

GTX02855 WB Image

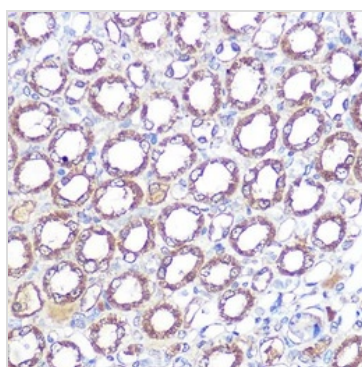
Various tissue extracts (50 µg) were separated by 7.5% SDS-PAGE, and the membrane was blotted with ERK5 antibody [GT1258] (GTX02855) diluted at 1:500. The HRP-conjugated anti-rabbit IgG antibody (GTX213110-01) was used to detect the primary antibody.

The observed M.W. is based on the publication: PMID: 15692064


GTX02855 WB Image

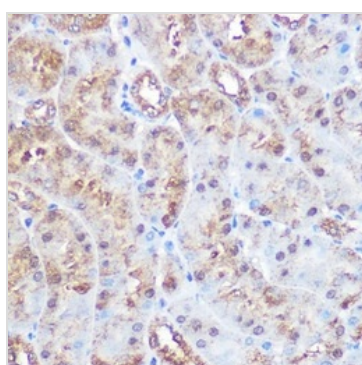
Various whole cell extracts (30 µg) were separated by 7.5% SDS-PAGE, and the membrane was blotted with ERK5 antibody [GT1258] (GTX02855) diluted at 1:500. The HRP-conjugated anti-rabbit IgG antibody (GTX213110-01) was used to detect the primary antibody.

The observed M.W. is based on the publication: PMID: 15692064


GTX02855 IHC-P Image

IHC-P analysis of mouse kidney tissue section using GTX02855 ERK5 antibody [GT1258].

Dilution : 1:100


GTX02855 IHC-P Image

IHC-P analysis of mouse kidney tissue section using GTX02855 ERK5 antibody [GT1258].

Dilution : 1:100



For full product information, images and publications, please visit our [website](https://www.genetex.com).