

PF4 antibody [GT1260]

Cat. No. GTX02857

Host	Rabbit
Clonality	Monoclonal
Isotype	IgG
Applications	WB, IHC-P
Reactivity	Human, Mouse, Rat

Package
100 µl

Applications

Application Note

*Optimal dilutions/concentrations should be determined by the researcher.

Suggested dilution	Recommended dilution
WB	1:500 - 1:2000
IHC-P	1:50 - 1:200

Not tested in other applications.

Calculated MW 11 kDa. ([Note](#))

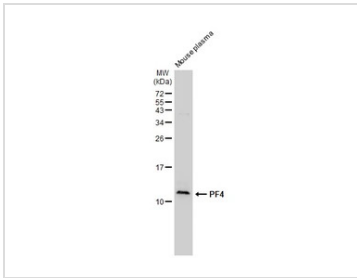
Properties

Form	Liquid
Buffer	PBS, 0.05% BSA, 50% Glycerol
Preservative	0.02% Sodium azide
Storage	Store as concentrated solution. Centrifuge briefly prior to opening vial. For short-term storage (1-2 weeks), store at 4°C. For long-term storage, we recommend adding 50% glycerol, then aliquot and store at -20°C or below. Avoid multiple freeze-thaw cycles.
Concentration	0.13 mg/ml (Please refer to the vial label for the specific concentration.)
Immunogen	A synthesized peptide derived from human PF4
Purification	Purified by antigen-affinity chromatography
Conjugation	Unconjugated
Note	For laboratory research use only. Not for any clinical, therapeutic, or diagnostic use in humans or animals. Not for animal or human consumption. Purchasers shall not, and agree not to enable third parties to, analyze, copy, reverse engineer or otherwise attempt to determine the structure or sequence of the product.



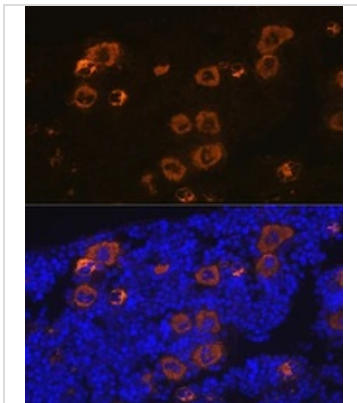
For full product information, images and publications, please visit our [website](#).

DATA IMAGES



GTx02857 WB Image

Mouse plasma (50 µg) was separated by 15% SDS-PAGE, and the membrane was blotted with PF4 antibody [GT1260] (GTx02857) diluted at 1:1000. The HRP-conjugated anti-rabbit IgG antibody (GTx213110-01) was used to detect the primary antibody.

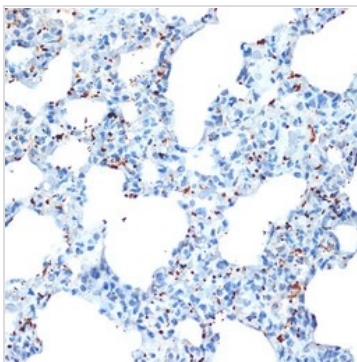


GTx02857 IHC-P Image

IHC-P analysis of mouse bone marrow section using PF4 antibody [GT1260] PF4 antibody [GT1260].

Dilution : 1:100

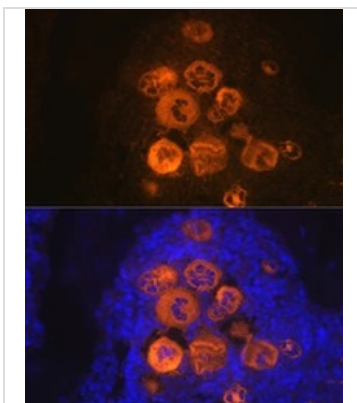
Blue : DAPI for nuclear staining.



GTx02857 IHC-P Image

IHC-P analysis of rat lung tissue section using GTx02857 PF4 antibody [GT1260].

Dilution : 1:100



GTx02857 IHC-P Image

IHC-P analysis of rat bone marrow section using PF4 antibody [GT1260] PF4 antibody [GT1260].

Dilution : 1:100

Blue : DAPI for nuclear staining.



For full product information, images and publications, please visit our [website](https://www.genetex.com).