

## Human IL4 protein, His tag (active)

Cat. No. GTX02862-pro

**Applications** Functional Assay**Species** Human**Package**

50 µg

## Applications

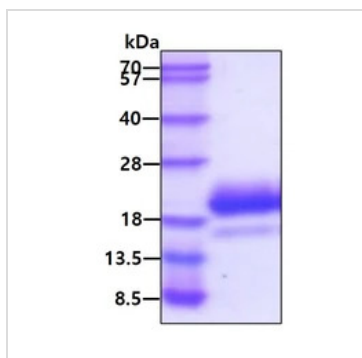
## Application Note

Measured in a cell proliferation assay using TF-1 human erythroleukemic cell. The ED<sub>50</sub> range ≤ 0.5 ng/ml.

## Properties

**Form** Liquid**Buffer** PBS, 10% Glycerol**Preservative** No preservatives**Storage** Store as concentrated solution. Centrifuge briefly prior to opening vial. For short-term storage (1 week), store at 4°C. For long-term storage, aliquot and store at -20°C or below. Avoid multiple freeze-thaw cycles.**Concentration** 0.5 mg/ml (Please refer to the vial label for the specific concentration.)**Region/Sequence** His-Tagged, 25-153aa (P05112, NP\_000580)**Expression System** HEK293 cells**Purity** > 90% by SDS-PAGE**Endotoxin** < 1.0 EU/µg (determined by LAL method)**Conjugation** Unconjugated**Note** For *In vitro* laboratory use only. Not for any clinical, therapeutic, or diagnostic use in humans or animals. Not for animal or human consumption.

## DATA IMAGES

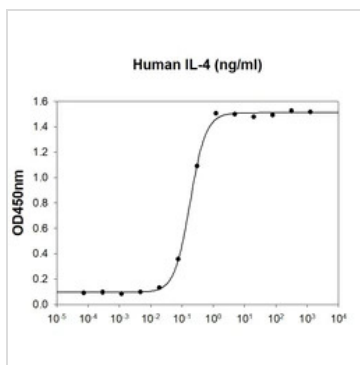


## GTX02862-pro Image

SDS-PAGE analysis of 3µg GTX02862-pro Human IL4 protein, His tag (active) under reducing condition.



For full product information, images and publications, please visit our [website](https://www.genetex.com).



## GTx02862-pro Functional Assay Image

Cell proliferation assay of Human IL4 protein (active) (GTx02862-pro) in TF-1 cells.

ED<sub>50</sub> : ≤ 0.5 ng/ml



For full product information, images and publications, please visit our [website](#).