

Mouse ENTPD6 protein, His tag (active)

Cat. No. GTX02863-pro

Applications Functional Assay**Species** Mouse**Package**

50 µg

Applications

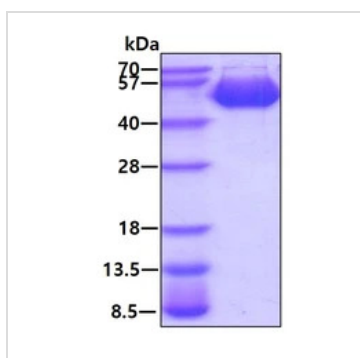
Application Note

Specific activity is > 80,000 pmol/min/µg, and is defined as the amount of enzyme that hydrolyze GDP per minute at pH 7.5, at 25°C.

Properties

Form Liquid**Buffer** PBS, 20% Glycerol**Preservative** No preservatives**Storage** Store as concentrated solution. Centrifuge briefly prior to opening vial. For short-term storage (1 week), store at 4°C. For long-term storage, aliquot and store at -20°C or below. Avoid multiple freeze-thaw cycles.**Concentration** 0.25 mg/ml (Please refer to the vial label for the specific concentration.)**Region/Sequence** His-Tagged; 33-455aa (Q3U0P5, NP_742115.2)**Expression System** HEK293 cells**Purity** > 95% by SDS-PAGE**Endotoxin** < 1.0 EU/µg (determined by LAL method)**Conjugation** Unconjugated**Note** For *In vitro* laboratory use only. Not for any clinical, therapeutic, or diagnostic use in humans or animals. Not for animal or human consumption.

DATA IMAGES



GTX02863-pro Image

SDS-PAGE analysis of 3µg GTX02863-pro Mouse ENTPD6 protein, His tag (active) under reducing condition.



For full product information, images and publications, please visit our [website](#).