

## Human Folate Receptor beta protein, His tag

**Cat. No. GTX02865-pro****Applications** Functional Assay**Species** Human**Package**

50 µg

## Applications

**Application Note**

Binding assay: Measured by its binding ability in a functional ELISA with Folic Acid-BSA. The ED<sub>50</sub> range ≤ 5 µg/ml.

## Properties

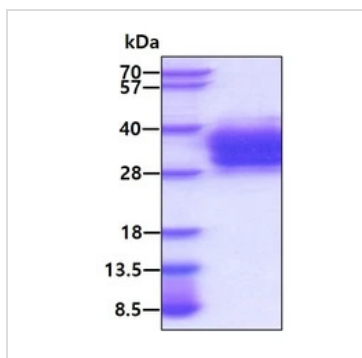
**Form** Liquid**Buffer** PBS, 10% Glycerol**Preservative** No preservatives

**Storage** Store as concentrated solution. Centrifuge briefly prior to opening vial. For short-term storage (1 week), store at 4°C. For long-term storage, aliquot and store at -20°C or below. Avoid multiple freeze-thaw cycles.

**Concentration** 0.25 mg/ml (Please refer to the vial label for the specific concentration.)**Region/Sequence** His-Tagged; 22-230aa (P14207, NP\_000794.3)**Expression System** HEK293 cells**Purity** > 90% by SDS-PAGE**Endotoxin** < 1.0 EU/µg (determined by LAL method)**Conjugation** Unconjugated

**Note** For *In vitro* laboratory use only. Not for any clinical, therapeutic, or diagnostic use in humans or animals. Not for animal or human consumption.

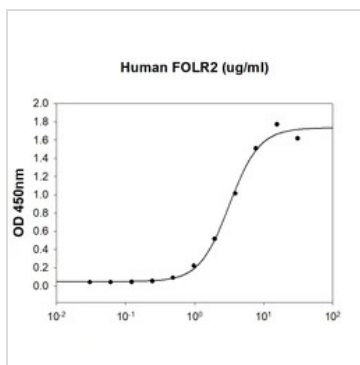
## DATA IMAGES

**GTX02865-pro Image**

SDS-PAGE analysis of 3µg GTX02865-pro Human Folate Receptor beta protein under reducing condition.



For full product information, images and publications, please visit our [website](https://www.genetex.com).



#### GTx02865-pro Functional Assay Image

The protein binding activity was measured in a functional ELISA analysis of GTx02865-pro Human Folate Receptor beta protein which can bind immobilized Folic Acid-BSA.

Immobilized recombinant Folic Acid-BSA : 10 µg/ml (100 µl/well)

GTx02865-pro : ≤ 5 µg/ml



For full product information, images and publications, please visit our [website](#).