

## C6ORF150 antibody

Cat. No. GTX02874

Host	Rabbit
Clonality	Polyclonal
Isotype	IgG
Applications	WB, ICC/IF, IHC-P
Reactivity	Human, Mouse, Rat

References ( 2 )

Package

100 µl

## Applications

## Application Note

\*Optimal dilutions/concentrations should be determined by the researcher.

Suggested dilution	Recommended dilution
WB	1:500 - 1:2000
ICC/IF	Assay dependent
IHC-P	1:50 - 1:200

Not tested in other applications.

Calculated MW 59 kDa. ( [Note](#) )

## Properties

Form	Liquid
Buffer	PBS, 50% Glycerol
Preservative	0.02% Sodium azide
Storage	Store as concentrated solution. Centrifuge briefly prior to opening vial. For short-term storage (1-2 weeks), store at 4°C. For long-term storage, aliquot and store at -20°C or below. Avoid multiple freeze-thaw cycles.
Concentration	Batch dependent (Please refer to the vial label for the specific concentration.)
Immunogen	Recombinant fusion protein containing a sequence corresponding to amino acids 350-522 of human cGAS (NP_612450.2).
Purification	Purified by affinity chromatography
Conjugation	Unconjugated

## Note

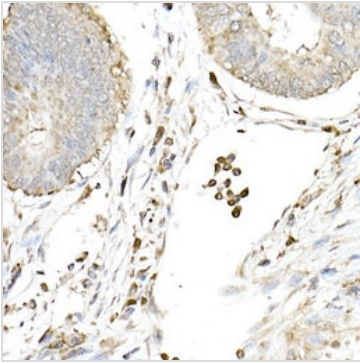
For laboratory research use only. Not for any clinical, therapeutic, or diagnostic use in humans or animals. Not for animal or human consumption.

Purchasers shall not, and agree not to enable third parties to, analyze, copy, reverse engineer or otherwise attempt to determine the structure or sequence of the product.



For full product information, images and publications, please visit our [website](#).

## DATA IMAGES

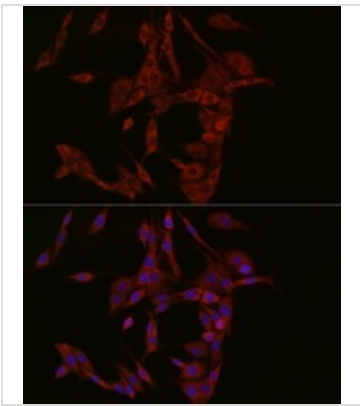


### GTx02874 IHC-P Image

IHC-P analysis of Human colon carcinoma tissue using GTx02874 C6ORF150 antibody.

Antigen retrieval : high pressure antigen retrieval with 10 mM citrate buffer pH 6.

Dilution : 1:50



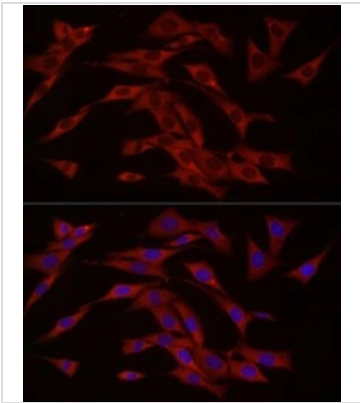
### GTx02874 ICC/IF Image

ICC/IF analysis of PC-12 cells using GTx02874 C6ORF150 antibody.

Orange : Primary antibody

Blue : DAPI

Dilution : 1:50



### GTx02874 ICC/IF Image

ICC/IF analysis of NIH/3T cells using GTx02874 C6ORF150 antibody.

Orange : Primary antibody

Blue : DAPI

Dilution : 1:50



For full product information, images and publications, please visit our [website](#).