

SDF1 antibody

Cat. No. GTX02876

Host	Rabbit
Clonality	Polyclonal
Isotype	IgG
Application	WB, IHC-P, ELISA
Reactivity	Human, Mouse, Rat

Package
100 µg

APPLICATION

Application Note

*Optimal dilutions/concentrations should be determined by the researcher.

Suggested dilution	Recommended dilution
WB	0.1-0.5µg/ml
IHC-P	0.5-1µg/ml
ELISA	0.1-0.5µg/ml

Not tested in other applications.

Calculated MW 11 kDa. ([Note](#))

PROPERTIES

Form	Liquid
Buffer	4mg Trehalose, 0.9mg NaCl, 0.2mg Na ₂ HPO ₄
Preservative	0.05mg Sodium azide
Storage	Store as concentrated solution. Centrifuge briefly prior to opening vial. For short-term storage (1-2 weeks), store at 4°C. For long-term storage, aliquot and store at -20°C or below. Avoid multiple freeze-thaw cycles.
Concentration	0.5-1 mg/ml (Please refer to the vial label for the specific concentration.)
Immunogen	E. coli-derived human CXCL12 recombinant protein (Position: V24-M93).
Purification	Purified by affinity chromatography
Conjugation	Unconjugated

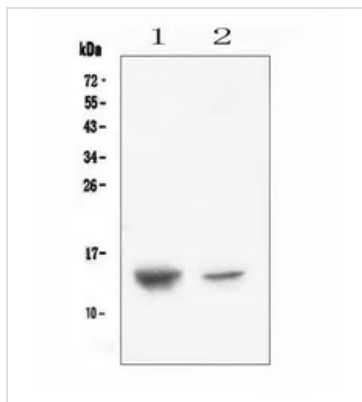
Note

For laboratory research use only. Not for any clinical, therapeutic, or diagnostic use in humans or animals. Not for animal or human consumption.

Purchasers shall not, and agree not to enable third parties to, analyze, copy, reverse engineer or otherwise attempt to determine the structure or sequence of the product.



For full product information, images and publications, please visit our [website](#).

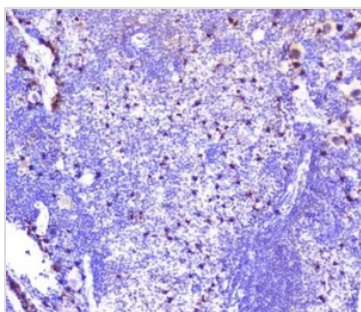
DATA IMAGES

GTx02876 WB Image

WB analysis of various samples using GTx02876 SDF1 antibody.

Lane 1 : human placenta tissue lysate

Lane 2 : A431 whole cell lysate

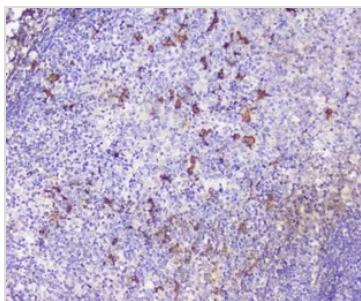
Dilution : 0.5 µg/ml


GTx02876 IHC-P Image

IHC-P analysis of mouse spleen tissue using GTx02876 SDF1 antibody.

Antigen retrieval : Heat mediated antigen retrieval was performed in citrate buffer (pH6, epitope retrieval solution) for 20 mins

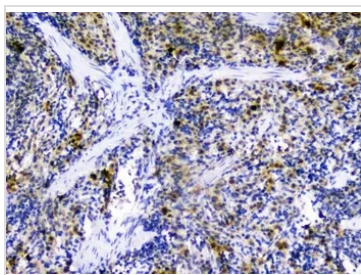
Dilution : 1 µg/ml


GTx02876 IHC-P Image

IHC-P analysis of human tonsil tissue using GTx02876 SDF1 antibody.

Antigen retrieval : Heat mediated antigen retrieval was performed in citrate buffer (pH6, epitope retrieval solution) for 20 mins

Dilution : 1 µg/ml


GTx02876 IHC-P Image

IHC-P analysis of rat spleen tissue using GTx02876 SDF1 antibody.

Antigen retrieval : Heat mediated antigen retrieval was performed in citrate buffer (pH6, epitope retrieval solution) for 20 mins

Dilution : 1 µg/ml



For full product information, images and publications, please visit our [website](https://www.genetex.com).