

CD22 antibody [S-HCL-1]

Cat. No. GTX02878

Host	Mouse
Clonality	Monoclonal
Isotype	IgG2b
Applications	FCM
Reactivity	Human

Package
100 µg

Applications

Application Note

*Optimal dilutions/concentrations should be determined by the researcher.

Suggested dilution	Recommended dilution
FCM	1-4µg/ml

Note : Do not need a permeabilization step.

Not tested in other applications.

Product Note

The mouse monoclonal antibody S-HCL-1 (also known as S-HCL1) recognizes an extracellular epitope of CD22 (BL-CAM), a 130 kDa type I transmembrane glycoprotein (immunoglobulin superfamily) expressed in the cytoplasm of pro-B and pre-B lymphocytes, and on the surface of mature and activated B lymphocytes; it is lost on plasma cells, peripheral blood T lymphocytes, granulocytes and monocytes.

Properties

Form	Liquid
Buffer	TBS
Preservative	15mM Sodium azide
Storage	Store as concentrated solution. Centrifuge briefly prior to opening vial. Store at 4°C. DO NOT FREEZE.
Concentration	1 mg/ml (Please refer to the vial label for the specific concentration.)
Immunogen	Whole hairy cell leukemia cells and membrane preparation
Purification	Protein A purified
Conjugation	Unconjugated

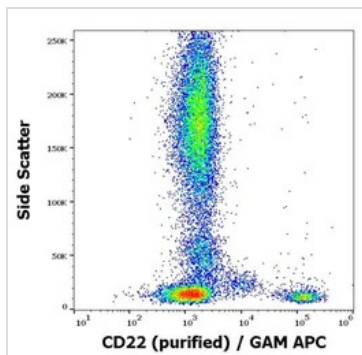
Note

For laboratory research use only. Not for any clinical, therapeutic, or diagnostic use in humans or animals. Not for animal or human consumption.

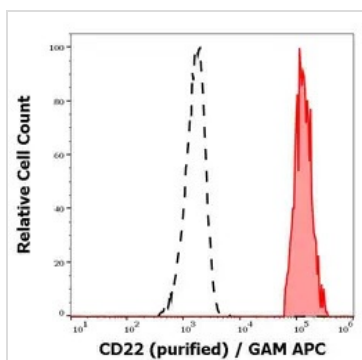
Purchasers shall not, and agree not to enable third parties to, analyze, copy, reverse engineer or otherwise attempt to determine the structure or sequence of the product.



For full product information, images and publications, please visit our [website](#).

DATA IMAGES

GTX02878 FCM Image

FACS analysis of human peripheral blood using GTX02878 CD22 antibody [S-HCL-1].
Dilution : 3 µg/ml


GTX02878 FCM Image

FACS analysis of human peripheral whole blood using GTX02878 CD22 antibody [S-HCL-1].
Red-filled : human CD22 positive lymphocytes from human neutrophil granulocytes
black-dashed : human neutrophil granulocytes
Dilution : 3 µg/ml



For full product information, images and publications, please visit our [website](#).