

CD22 antibody [S-HCL-1] (PE)

Cat. No. GTX02878-08

Host	Mouse
Clonality	Monoclonal
Isotype	IgG2b
Application	FACS
Reactivity	Human

Package
100 test

APPLICATION

Application Note

*Optimal dilutions/concentrations should be determined by the researcher.

Suggested dilution	Recommended dilution
FACS	10 μ l in 100 μ l of whole blood or 10 ⁶ cells in a suspension
Not tested in other applications.	

Calculated MW 95 kDa. ([Note](#))

Product Note

The mouse monoclonal antibody S-HCL-1 (also known as S-HCL1) recognizes an extracellular epitope of CD22 (BL-CAM), a 130 kDa type I transmembrane glycoprotein (immunoglobulin superfamily) expressed in the cytoplasm of pro-B and pre-B lymphocytes, and on the surface of mature and activated B lymphocytes; it is lost on plasma cells, peripheral blood T lymphocytes, granulocytes and monocytes.

PROPERTIES

Form	Liquid
Buffer	PBS
Preservative	15mM Sodium azide
Storage	Store as concentrated solution. Centrifuge briefly prior to opening vial. Store at 4°C. DO NOT FREEZE. Protect from light.
Immunogen	Whole hairy cell leukemia cells and membrane preparation
Purification	Purified by size-exclusion chromatography
Conjugation	Phycoerythrin (PE)

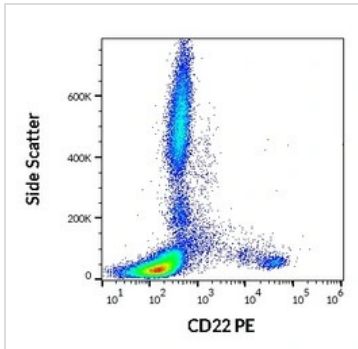
Note

For laboratory research use only. Not for any clinical, therapeutic, or diagnostic use in humans or animals. Not for animal or human consumption.

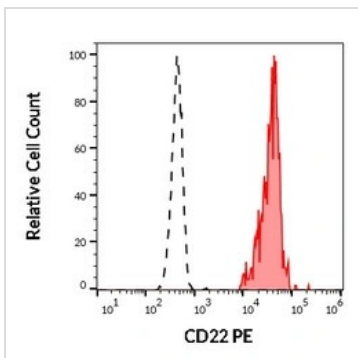
Purchasers shall not, and agree not to enable third parties to, analyze, copy, reverse engineer or otherwise attempt to determine the structure or sequence of the product.



For full product information, images and publications, please visit our [website](#).

DATA IMAGES

GTX02878-08 FACS Image

FACS analysis of human peripheral whole blood using GTX02878-08 CD22 antibody [S-HCL-1] (PE).
Dilution : 10 μ l in 100 μ l of peripheral whole blood


GTX02878-08 FACS Image

FACS analysis of human peripheral whole blood using GTX02878-08 CD22 antibody [S-HCL-1] (PE).
Red-filled : human CD22 positive lymphocytes from human neutrophil granulocytes
black-dashed : human neutrophil granulocytes
Dilution : 10 μ l in 100 μ l of peripheral whole blood



For full product information, images and publications, please visit our [website](https://www.genetex.com).