

## CD22 antibody [S-HCL-1] (PerCP-Cy5.5)

Cat. No. GTX02878-11

Host	Mouse
Clonality	Monoclonal
Isotype	IgG2b
Applications	FCM
Reactivity	Human

**Package**  
100 test

## Applications

## Application Note

\*Optimal dilutions/concentrations should be determined by the researcher.

Suggested dilution	Recommended dilution
FCM	4 $\mu$ l in 100 $\mu$ l of whole blood or $10^6$ cells in a suspension

Not tested in other applications.

## Product Note

The mouse monoclonal antibody S-HCL-1 (also known as S-HCL1) recognizes an extracellular epitope of CD22 (BL-CAM), a 130 kDa type I transmembrane glycoprotein (immunoglobulin superfamily) expressed in the cytoplasm of pro-B and pre-B lymphocytes, and on the surface of mature and activated B lymphocytes; it is lost on plasma cells, peripheral blood T lymphocytes, granulocytes and monocytes.

## Properties

Form	Liquid
Buffer	PBS
Preservative	15mM Sodium azide
Storage	Store as concentrated solution. Centrifuge briefly prior to opening vial. Store at 4°C. DO NOT FREEZE. Protect from light.
Immunogen	Whole hairy cell leukemia cells and membrane preparation
Purification	Purified by size-exclusion chromatography
Conjugation	Peridinin-chlorophyll proteins-Cyanine5.5 (PerCP-Cy5.5) <a href="#">Wavelength</a>

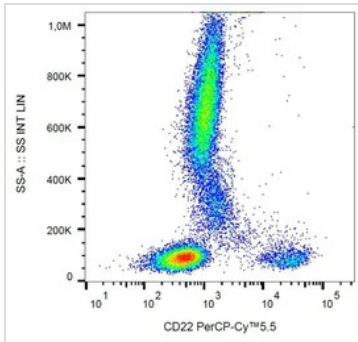
## Note

For laboratory research use only. Not for any clinical, therapeutic, or diagnostic use in humans or animals. Not for animal or human consumption.

Purchasers shall not, and agree not to enable third parties to, analyze, copy, reverse engineer or otherwise attempt to determine the structure or sequence of the product.



For full product information, images and publications, please visit our [website](#).

**DATA IMAGES**

**GTX02878-11 FCM Image**

FACS analysis of human peripheral blood using GTX02878-11 CD22 antibody [S-HCL-1] (PerCP-Cy5.5).



For full product information, images and publications, please visit our [website](https://www.genetex.com).