

IRF3 (phospho Ser396) antibody

Cat. No. GTX02883

| | |
|---------------------|--------------------------|
| Host | Rabbit |
| Clonality | Polyclonal |
| Isotype | IgG |
| Applications | WB, ICC/IF, IHC-P, ELISA |
| Reactivity | Human, Mouse, Rat |

Package
100 µl

Applications

Application Note

*Optimal dilutions/concentrations should be determined by the researcher.

| Suggested dilution | Recommended dilution |
|--------------------|----------------------|
| WB | 1:500-1:2000 |
| ICC/IF | 1:100-1:500 |
| IHC-P | 1:50-1:200 |
| ELISA | Assay dependent |

Not tested in other applications.

Calculated MW 47 kDa. ([Note](#))

Properties

| | |
|----------------------|--|
| Form | Liquid |
| Buffer | PBS, 150mM NaCl, 50% Glycerol |
| Preservative | 0.02% Sodium azide |
| Storage | Store as concentrated solution. Centrifuge briefly prior to opening vial. For short-term storage (1-2 weeks), store at 4°C. For long-term storage, aliquot and store at -20°C or below. Avoid multiple freeze-thaw cycles. |
| Concentration | 1 mg/ml (Please refer to the vial label for the specific concentration.) |
| Immunogen | A synthesized peptide derived from human IRF3 around the phosphorylation site of Ser396. |
| Purification | Purified by affinity purification via sequential chromatography on phospho-peptide and non-phospho-peptide affinity columns From serum |
| Conjugation | Unconjugated |



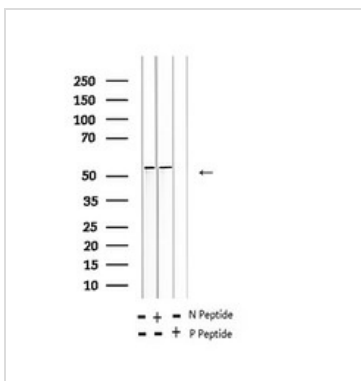
For full product information, images and publications, please visit our [website](#).

For laboratory research use only. Not for any clinical, therapeutic, or diagnostic use in humans or animals. Not for animal or human consumption.

Note

Purchasers shall not, and agree not to enable third parties to, analyze, copy, reverse engineer or otherwise attempt to determine the structure or sequence of the product.

DATA IMAGES



GTX02883 WB Image

WB analysis of plpC-transfected HT29 cell lysate using GTX02883 IRF3 (phospho Ser396) antibody.

N peptide : Non-phospho peptide

P peptide : Phospho peptide

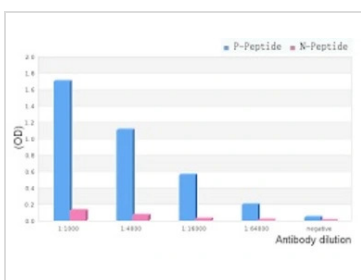


GTX02883 IHC-P Image

IHC-P analysis of rat heart tissue using GTX02883 IRF3 (phospho Ser396) antibody.

Antigen retrieval : Heat mediated antigen retrieval step in citrate buffer was performed

Dilution : 1:100



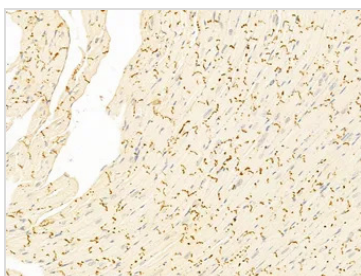
GTX02883 ELISA Image

ELISA analysis of phospho- and non-phospho-immunogen peptide using GTX02883 IRF3 (phospho Ser396) antibody.

P-peptide : phospho-peptide

N-peptide : non-phospho-peptide

Peptides concentration : 1µg/ml



GTX02883 IHC-P Image

IHC-P analysis of mouse heart tissue using GTX02883 IRF3 (phospho Ser396) antibody.

Antigen retrieval : Heat mediated antigen retrieval step in citrate buffer was performed

Dilution : 1:100



For full product information, images and publications, please visit our [website](#).