

## HDAC6 antibody

Cat. No. GTX02885

<b>Host</b>	Rabbit
<b>Clonality</b>	Polyclonal
<b>Isotype</b>	IgG
<b>Applications</b>	WB, ICC/IF, IHC-P, IP
<b>Reactivity</b>	Human, Mouse

Package  
100 µl

## Applications

## Application Note

\*Optimal dilutions/concentrations should be determined by the researcher.

Suggested dilution	Recommended dilution
WB	Assay dependent
ICC/IF	Assay dependent
IHC-P	Assay dependent
IP	Assay dependent

Not tested in other applications.

**Calculated MW** 131 kDa. ([Note](#))

## Properties

<b>Form</b>	Liquid
<b>Buffer</b>	PBS, 50% Glycerol
<b>Preservative</b>	0.02% Sodium azide
<b>Storage</b>	Store as concentrated solution. Centrifuge briefly prior to opening vial. For short-term storage (1-2 weeks), store at 4°C. For long-term storage, aliquot and store at -20°C or below. Avoid multiple freeze-thaw cycles.
<b>Concentration</b>	Batch dependent (Please refer to the vial label for the specific concentration.)
<b>Immunogen</b>	Recombinant fusion protein containing a sequence corresponding to amino acids 836-1104 of human HDAC6 (NP_006035.2).
<b>Purification</b>	Purified by affinity chromatography
<b>Conjugation</b>	Unconjugated



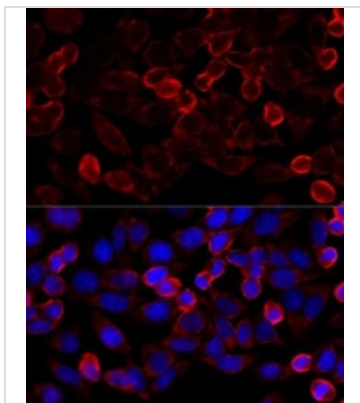
For full product information, images and publications, please visit our [website](#).

For laboratory research use only. Not for any clinical, therapeutic, or diagnostic use in humans or animals. Not for animal or human consumption.

**Note**

Purchasers shall not, and agree not to enable third parties to, analyze, copy, reverse engineer or otherwise attempt to determine the structure or sequence of the product.

DATA IMAGES



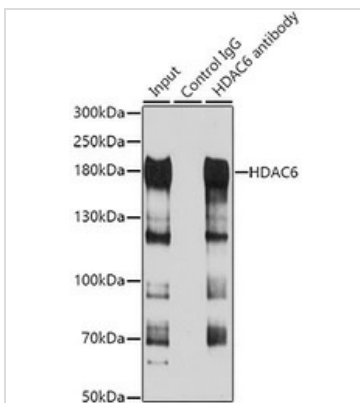
**GTX02885 ICC/IF Image**

ICC/IF analysis of PFA-fixed HeLa cells using using GTX02885 HDAC6 antibody.

Red : Primary antibody

Blue : DAPI

Dilution : 1:100



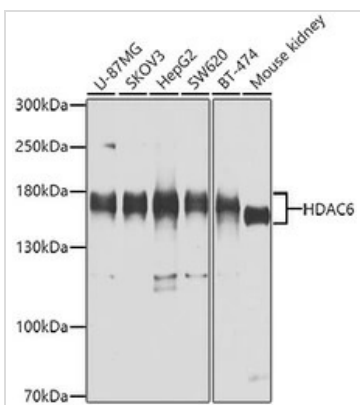
**GTX02885 IP Image**

IP analysis of HepG2 lysate using GTX02885 HDAC6 antibody.

Total extract : 100µg

IP antibody amount : 3µg

Dilution : 1:1000



**GTX02885 WB Image**

WB analysis of various samples using GTX02885 HDAC6 antibody.

Dilution : 1:1000

Loading : 25µg



For full product information, images and publications, please visit our [website](#).