

## Apolipoprotein E antibody [E981]

Cat. No. GTX02906

Host	Mouse
Clonality	Monoclonal
Isotype	IgG2a
Applications	WB, ELISA, Sandwich ELISA
Reactivity	Human, Monkey

Package  
250 µg

## Applications

## Application Note

\*Optimal dilutions/concentrations should be determined by the researcher.

Suggested dilution	Recommended dilution
WB	Assay dependent
ELISA	Assay dependent
Sandwich ELISA	Assay dependent

**Note : Capture: GTX02906 / GTX02904, Detection: GTX02905-02.**

Not tested in other applications.

Calculated MW	36 kDa. ( <a href="#">Note</a> )
Product Note	This antibody is able to detect native and recombinant monkey apolipoprotein E (isoforms apoE2, apoE3 and apoE4).

## Properties

Form	Liquid
Buffer	PBS
Preservative	0.02% Sodium azide
Storage	Store as concentrated solution. Centrifuge briefly prior to opening vial. For short-term storage (1-2 weeks), store at 4°C. For long-term storage, aliquot and store at -20°C or below. Avoid multiple freeze-thaw cycles.
Concentration	0.5 mg/ml (Please refer to the vial label for the specific concentration.)
Immunogen	Purified human apolipoprotein E
Purification	Protein G purified From tissue culture supernatant
Conjugation	Unconjugated

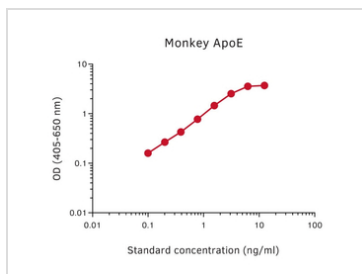
For full product information, images and publications, please visit our [website](#).

For laboratory research use only. Not for any clinical, therapeutic, or diagnostic use in humans or animals. Not for animal or human consumption.

## Note

Purchasers shall not, and agree not to enable third parties to, analyze, copy, reverse engineer or otherwise attempt to determine the structure or sequence of the product.

## DATA IMAGES



## GTx02906 ELISA Image

Sandwich ELISA analysis of monkey apoE protein using GTx02906 Apolipoprotein E antibody [E981] as coating antibody and GTx02905-02 Apolipoprotein E antibody [E887] (Biotin) as detecting antibody.



For full product information, images and publications, please visit our [website](https://www.genetex.com).