

CDKN2A / p16INK4a antibody

Cat. No. GTX03119

Host	Rabbit
Clonality	Polyclonal
Isotype	IgG
Applications	WB, ICC/IF
Reactivity	Human

References (1)

Package

100 µl

Applications

Application Note

*Optimal dilutions/concentrations should be determined by the researcher.

Suggested dilution	Recommended dilution
WB	1:2000-1:10000
ICC/IF	1:50-1:200

Not tested in other applications.

Properties

Form	Liquid
Buffer	PBS, 50% Glycerol
Preservative	0.02% Sodium azide
Storage	Store as concentrated solution. Centrifuge briefly prior to opening vial. For short-term storage (1-2 weeks), store at 4°C. For long-term storage, aliquot and store at -20°C or below. Avoid multiple freeze-thaw cycles.
Concentration	Batch dependent (Please refer to the vial label for the specific concentration.)
Immunogen	A synthetic peptide corresponding to a sequence within amino acids 20 to the C-terminus of human CDKN2A / p16INK4a.
Purification	Purified by affinity chromatography
Conjugation	Unconjugated

Note

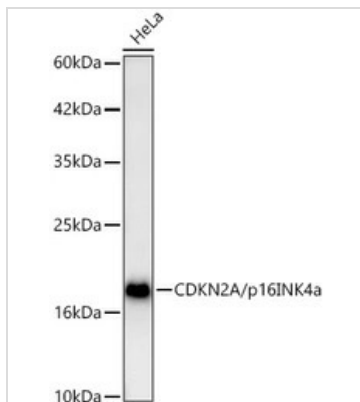
For laboratory research use only. Not for any clinical, therapeutic, or diagnostic use in humans or animals. Not for animal or human consumption.

Purchasers shall not, and agree not to enable third parties to, analyze, copy, reverse engineer or otherwise attempt to determine the structure or sequence of the product.



For full product information, images and publications, please visit our [website](#).

DATA IMAGES

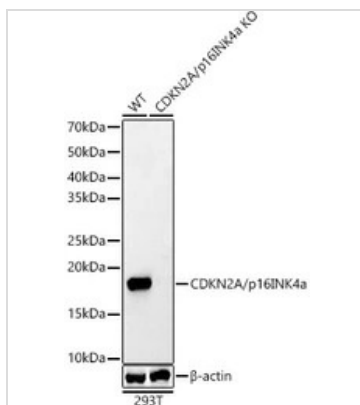


GTX03119 WB Image

WB analysis of HeLa cell lysate using GTX03119 CDKN2A / p16INK4a antibody.

Loading : 25 µg

Dilution : 1:18000

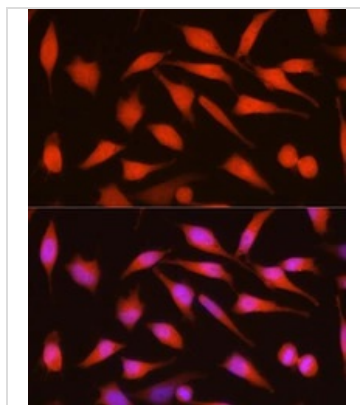


GTX03119 WB Image

WB analysis of 293T cells with/without CDKN2A/p16INK4a KO samples using GTX03119 CDKN2A / p16INK4a antibody.

Loading : 25 µg

Dilution : 1:1000



GTX03119 ICC/IF Image

ICC/IF analysis of HeLa cells using GTX03119 CDKN2A / p16INK4a antibody.

Red : Primary antibody

Blue : DAPI

Dilution : 1:200



For full product information, images and publications, please visit our [website](https://www.genetex.com).