

# SMCR7L antibody

**Cat. No. GTX03170**

<b>Host</b>	Rabbit
<b>Clonality</b>	Polyclonal
<b>Isotype</b>	IgG
<b>Applications</b>	WB, IHC-P
<b>Reactivity</b>	Human, Mouse, Rat

**Package**  
100 µl

## Applications

### Application Note

\*Optimal dilutions/concentrations should be determined by the researcher.

Suggested dilution	Recommended dilution
WB	1:500-1:2000
IHC-P	1:50-1:200

Not tested in other applications.

**Calculated MW** 51 kDa. ( [Note](#) )

## Properties

<b>Form</b>	Liquid
<b>Buffer</b>	PBS, 150mM NaCl, 50% Glycerol
<b>Preservative</b>	0.02% Sodium azide
<b>Storage</b>	Store as concentrated solution. Centrifuge briefly prior to opening vial. For short-term storage (1-2 weeks), store at 4°C. For long-term storage, aliquot and store at -20°C or below. Avoid multiple freeze-thaw cycles.
<b>Concentration</b>	1 mg/ml (Please refer to the vial label for the specific concentration.)
<b>Immunogen</b>	A synthesized peptide derived from human SMCR7L/MID51, corresponding to a region within the internal amino acids.
<b>Purification</b>	Purified by antigen-affinity chromatography
<b>Conjugation</b>	Unconjugated

### Note

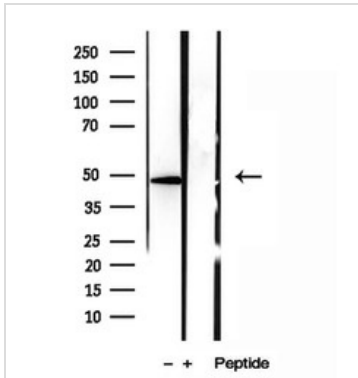
For laboratory research use only. Not for any clinical, therapeutic, or diagnostic use in humans or animals. Not for animal or human consumption.

Purchasers shall not, and agree not to enable third parties to, analyze, copy, reverse engineer or otherwise attempt to determine the structure or sequence of the product.



For full product information, images and publications, please visit our [website](#).

## DATA IMAGES



### GTX03170 WB Image

WB analysis of HT-1080 cell lysate using GTX03170 SMCR7L antibody.

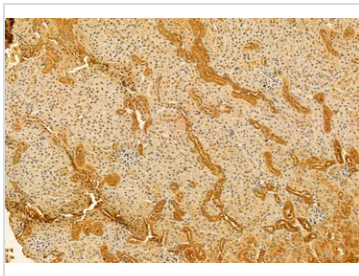


### GTX03170 IHC-P Image

IHC-P analysis of rat heart tissue using GTX03170 SMCR7L antibody.

Antigen retrieval : Heat mediated antigen retrieval step in citrate buffer was performed

Dilution : 1:100



### GTX03170 IHC-P Image

IHC-P analysis of mouse kidney tissue using GTX03170 SMCR7L antibody.

Antigen retrieval : Heat mediated antigen retrieval step in citrate buffer was performed

Dilution : 1:100



### GTX03170 IHC-P Image

IHC-P analysis of rat skin tissue using GTX03170 SMCR7L antibody.

Antigen retrieval : Heat mediated antigen retrieval step in citrate buffer was performed

Dilution : 1:100



For full product information, images and publications, please visit our [website](https://www.genetex.com).