

## Aggrecan antibody [GT1267]

Cat. No. GTX03179

Host	Rabbit
Clonality	Monoclonal
Isotype	IgG
Applications	WB, IHC-P
Reactivity	Human, Mouse, Rat

References ( 2 )

Package

100 µl

## Applications

## Application Note

\*Optimal dilutions/concentrations should be determined by the researcher.

Suggested dilution	Recommended dilution
WB	1:500 - 1:2000
IHC-P	1:50 - 1:200

Not tested in other applications.

**Calculated MW** 261 kDa. ( [Note](#) )

**Observed MW (kDa)** ~400 kDa. The observed M.W. is based on the following publication. PMID: 31972963

## Properties

Form	Liquid
Buffer	PBS, 0.05% BSA, 50% Glycerol
Preservative	0.02% Sodium azide
Storage	Store as concentrated solution. Centrifuge briefly prior to opening vial. For short-term storage (1-2 weeks), store at 4°C. For long-term storage, aliquot and store at -20°C or below. Avoid multiple freeze-thaw cycles.
Concentration	1.5 mg/ml (Please refer to the vial label for the specific concentration.)
Immunogen	A synthesized peptide derived from human Aggrecan.
Purification	Purified by affinity chromatography
Conjugation	Unconjugated

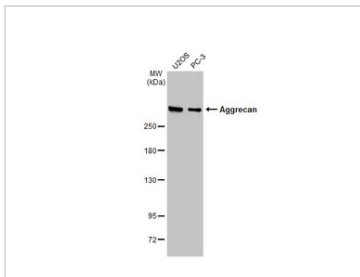
## Note

For laboratory research use only. Not for any clinical, therapeutic, or diagnostic use in humans or animals. Not for animal or human consumption.

Purchasers shall not, and agree not to enable third parties to, analyze, copy, reverse engineer or otherwise attempt to determine the structure or sequence of the product.

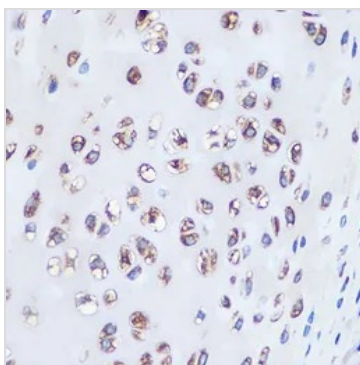


For full product information, images and publications, please visit our [website](#).

**DATA IMAGES**

**GTX03179 WB Image**

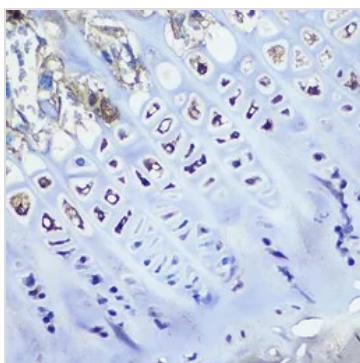
Various whole cell extracts (30 µg) were separated by 5% SDS-PAGE, and the membrane was blotted with Aggrecan antibody [GT1267] (GTX03179) diluted at 1:1000. The HRP-conjugated anti-rabbit IgG antibody (GTX213110-01) was used to detect the primary antibody. Corresponding RNA expression data for the same cell lines are based on Human Protein Atlas program.

The observed M.W. is based on the publication: PMID: 31972963


**GTX03179 IHC-P Image**

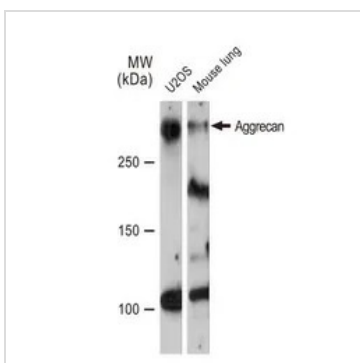
IHC-P analysis of rat bone marrow tissue section using GTX03179 Aggrecan antibody [GT1267].

Dilution : 1:100


**GTX03179 IHC-P Image**

IHC-P analysis of mouse bone marrow tissue section using GTX03179 Aggrecan antibody [GT1267].

Dilution : 1:100


**GTX03179 WB Image**

WB analysis of various samples using GTX03179 Aggrecan antibody [GT1267].

Dilution : 1:1000

Loading : 25µg per lane



For full product information, images and publications, please visit our [website](https://www.genetex.com).