

# alpha A Crystallin antibody [GT1276]

**Cat. No. GTX03188**

<b>Host</b>	Rabbit
<b>Clonality</b>	Monoclonal
<b>Isotype</b>	IgG
<b>Applications</b>	WB, IHC-P
<b>Reactivity</b>	Mouse, Rat

**Package**  
100 µl

## Applications

### Application Note

\*Optimal dilutions/concentrations should be determined by the researcher.

Suggested dilution	Recommended dilution
WB	1:500 - 1:2000
IHC-P	Assay dependent

Not tested in other applications.

## Properties

<b>Form</b>	Liquid
<b>Buffer</b>	PBS, 0.05% BSA, 50% Glycerol
<b>Preservative</b>	0.02% Sodium azide
<b>Storage</b>	Store as concentrated solution. Centrifuge briefly prior to opening vial. For short-term storage (1-2 weeks), store at 4°C. For long-term storage, aliquot and store at -20°C or below. Avoid multiple freeze-thaw cycles.
<b>Concentration</b>	3 mg/ml (Please refer to the vial label for the specific concentration.)
<b>Immunogen</b>	A synthesized peptide derived from human CRYAA.
<b>Purification</b>	Purified by affinity chromatography
<b>Conjugation</b>	Unconjugated

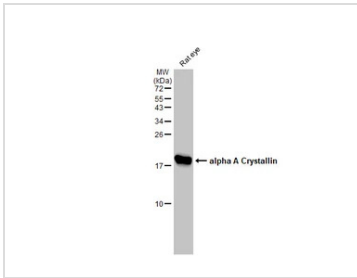
### Note

For laboratory research use only. Not for any clinical, therapeutic, or diagnostic use in humans or animals. Not for animal or human consumption.

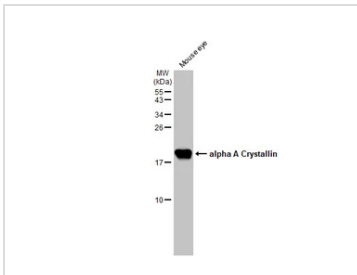
Purchasers shall not, and agree not to enable third parties to, analyze, copy, reverse engineer or otherwise attempt to determine the structure or sequence of the product.



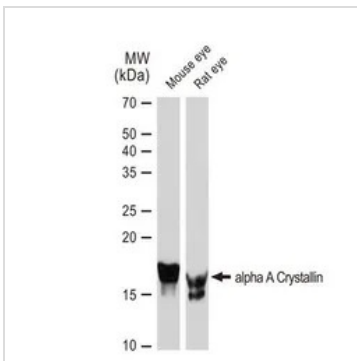
For full product information, images and publications, please visit our [website](#).

**DATA IMAGES**

**GTX03188 WB Image**

Rat tissue extract (50 µg) was separated by 15% SDS-PAGE, and the membrane was blotted with alpha A Crystallin antibody [GT1276] (GTX03188) diluted at 1:1000. The HRP-conjugated anti-rabbit IgG antibody (GTX213110-01) was used to detect the primary antibody.


**GTX03188 WB Image**

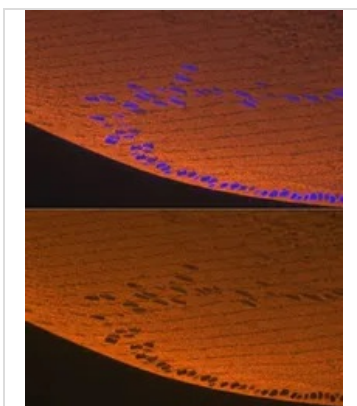
Mouse tissue extract (50 µg) was separated by 15% SDS-PAGE, and the membrane was blotted with alpha A Crystallin antibody [GT1276] (GTX03188) diluted at 1:1000. The HRP-conjugated anti-rabbit IgG antibody (GTX213110-01) was used to detect the primary antibody.


**GTX03188 WB Image**

WB analysis of various samples using GTX03188 alpha A Crystallin antibody [GT1276].

Dilution : 1:1000

Loading : 25µg per lane


**GTX03188 IHC-P Image**

IHC-P analysis of rat eye tissue section using GTX03188 alpha A Crystallin antibody [GT1276].

Blue : DAPI for nuclear staining

Dilution : 1:100



For full product information, images and publications, please visit our [website](https://www.genetex.com).