

DDB2 antibody [GT1277]

Cat. No. GTX03189

| | |
|--------------|--------------|
| Host | Rabbit |
| Clonality | Monoclonal |
| Isotype | IgG |
| Applications | WB |
| Reactivity | Human, Mouse |

Package
100 µl

Applications

Application Note

*Optimal dilutions/concentrations should be determined by the researcher.

| Suggested dilution | Recommended dilution |
|--------------------|----------------------|
| WB | 1:500 - 1:2000 |

Not tested in other applications.

Calculated MW 48 kDa. ([Note](#))

Properties

| | |
|---------------|----------------------------------------------------------------------------------------------------------------------------------------------------------------------------------------------------------------------------|
| Form | Liquid |
| Buffer | PBS, 0.05% BSA, 50% Glycerol |
| Preservative | 0.02% Sodium azide |
| Storage | Store as concentrated solution. Centrifuge briefly prior to opening vial. For short-term storage (1-2 weeks), store at 4°C. For long-term storage, aliquot and store at -20°C or below. Avoid multiple freeze-thaw cycles. |
| Concentration | 0.4 mg/ml (Please refer to the vial label for the specific concentration.) |
| Immunogen | A synthesized peptide derived from human DDB2. |
| Purification | Purified by affinity chromatography |
| Conjugation | Unconjugated |

Note

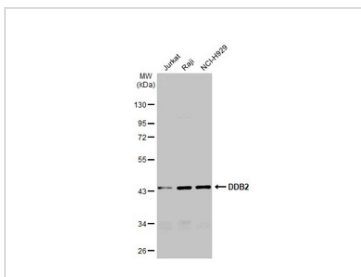
For laboratory research use only. Not for any clinical, therapeutic, or diagnostic use in humans or animals. Not for animal or human consumption.

Purchasers shall not, and agree not to enable third parties to, analyze, copy, reverse engineer or otherwise attempt to determine the structure or sequence of the product.



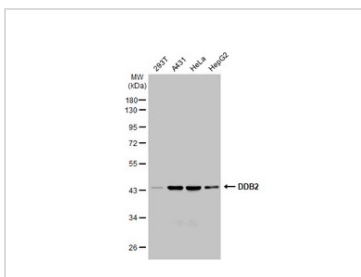
For full product information, images and publications, please visit our [website](#).

DATA IMAGES



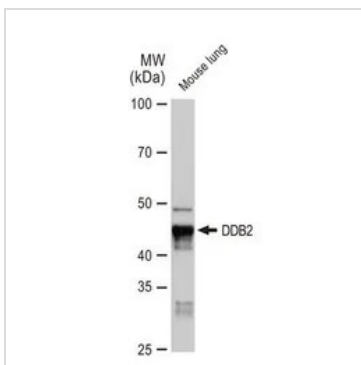
GTX03189 WB Image

Various whole cell extracts (30 µg) were separated by 10% SDS-PAGE, and the membrane was blotted with DDB2 antibody [GT1277] (GTX03189) diluted at 1:1000. The HRP-conjugated anti-rabbit IgG antibody (GTX213110-01) was used to detect the primary antibody.



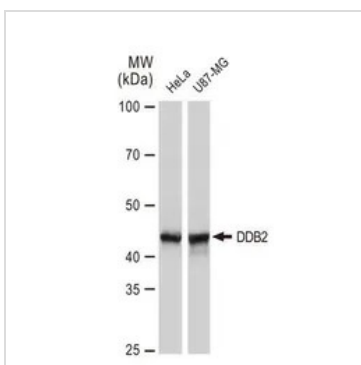
GTX03189 WB Image

Various whole cell extracts (30 µg) were separated by 10% SDS-PAGE, and the membrane was blotted with DDB2 antibody [GT1277] (GTX03189) diluted at 1:1000. The HRP-conjugated anti-rabbit IgG antibody (GTX213110-01) was used to detect the primary antibody.



GTX03189 WB Image

WB analysis of mouse lung tissue lysate using GTX03189 DDB2 antibody [GT1277].
Dilution : 1:1000
Loading : 25µg per lane



GTX03189 WB Image

WB analysis of various samples using GTX03189 DDB2 antibody [GT1277].
Dilution : 1:1000
Loading : 25µg per lane



For full product information, images and publications, please visit our [website](#).