

MARK2 antibody [GT1279]

Cat. No. GTX03191

Host	Rabbit
Clonality	Monoclonal
Isotype	IgG
Applications	WB
Reactivity	Human, Mouse, Rat

Package
100 µl

Applications

Application Note

*Optimal dilutions/concentrations should be determined by the researcher.

Suggested dilution	Recommended dilution
WB	1:500 - 1:2000

Not tested in other applications.

Calculated MW	88 kDa. (Note)
Observed MW (kDa)	82/78 kDa. The observed M.W. is based on the following publication. PMID: 23326495

Properties

Form	Liquid
Buffer	PBS, 0.05% BSA, 50% Glycerol
Preservative	0.02% Sodium azide
Storage	Store as concentrated solution. Centrifuge briefly prior to opening vial. For short-term storage (1-2 weeks), store at 4°C. For long-term storage, aliquot and store at -20°C or below. Avoid multiple freeze-thaw cycles.
Concentration	1.9 mg/ml (Please refer to the vial label for the specific concentration.)
Immunogen	A synthesized peptide derived from human MARK2.
Purification	Purified by affinity chromatography
Conjugation	Unconjugated

Note

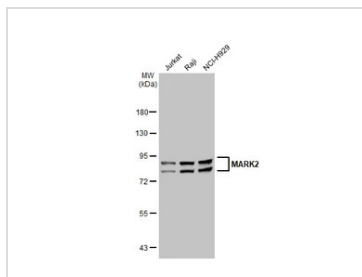
For laboratory research use only. Not for any clinical, therapeutic, or diagnostic use in humans or animals. Not for animal or human consumption.

Purchasers shall not, and agree not to enable third parties to, analyze, copy, reverse engineer or otherwise attempt to determine the structure or sequence of the product.



For full product information, images and publications, please visit our [website](#).

DATA IMAGES

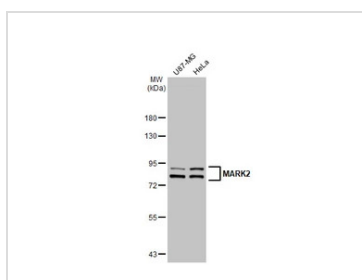


GTX03191 WB Image

Various whole cell extracts (30 µg) were separated by 7.5% SDS-PAGE, and the membrane was blotted with MARK2 antibody [GT1279] (GTX03191) diluted at 1:1000. The HRP-conjugated anti-rabbit IgG antibody (GTX213110-01) was used to detect the primary antibody.

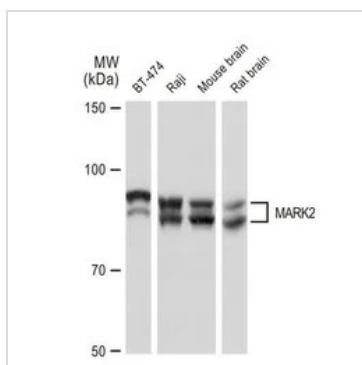
Multiple bands were observed 75 kDa, and 80 kDa kDa. It is possibly due to alternative splicing.

Reference: PMID: 23326495



GTX03191 WB Image

Various whole cell extracts (30 µg) were separated by 7.5% SDS-PAGE, and the membrane was blotted with MARK2 antibody [GT1279] (GTX03191) diluted at 1:1000. The HRP-conjugated anti-rabbit IgG antibody (GTX213110-01) was used to detect the primary antibody.



GTX03191 WB Image

WB analysis of various samples using GTX03191 MARK2 antibody [GT1279].

Dilution : 1:1000

Loading : 25µg per lane



For full product information, images and publications, please visit our [website](https://www.genetex.com).