

## GluR2 antibody [GT1283]

Cat. No. GTX03195

<b>Host</b>	Rabbit
<b>Clonality</b>	Monoclonal
<b>Isotype</b>	IgG
<b>Applications</b>	WB, ICC/IF, IHC-P
<b>Reactivity</b>	Human, Mouse, Rat

Package  
100 µl

## Applications

## Application Note

\*Optimal dilutions/concentrations should be determined by the researcher.

Suggested dilution	Recommended dilution
WB	1:500 - 1:2000
ICC/IF	1:50 - 1:200
IHC-P	1:50 - 1:200

Not tested in other applications.

**Calculated MW** 99 kDa. ([Note](#))

## Properties

<b>Form</b>	Liquid
<b>Buffer</b>	PBS, 0.05% BSA, 50% Glycerol
<b>Preservative</b>	0.02% Sodium azide
<b>Storage</b>	Store as concentrated solution. Centrifuge briefly prior to opening vial. For short-term storage (1-2 weeks), store at 4°C. For long-term storage, aliquot and store at -20°C or below. Avoid multiple freeze-thaw cycles.
<b>Concentration</b>	1.3 mg/ml (Please refer to the vial label for the specific concentration.)
<b>Immunogen</b>	A synthesized peptide derived from human GluR2.
<b>Purification</b>	Purified by affinity chromatography
<b>Conjugation</b>	Unconjugated

## Note

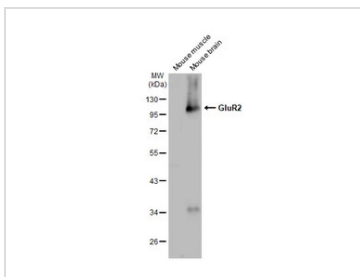
For laboratory research use only. Not for any clinical, therapeutic, or diagnostic use in humans or animals. Not for animal or human consumption.

Purchasers shall not, and agree not to enable third parties to, analyze, copy, reverse engineer or otherwise attempt to determine the structure or sequence of the product.

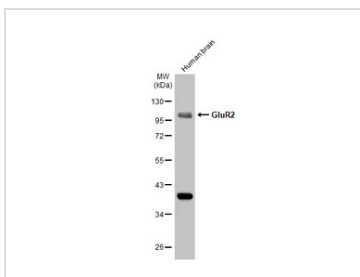


For full product information, images and publications, please visit our [website](#).

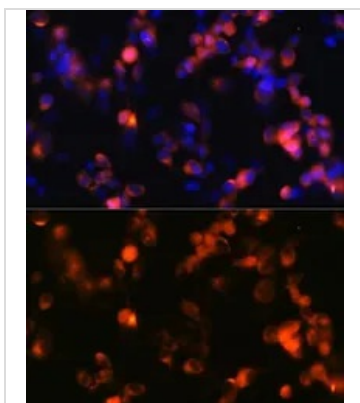
## DATA IMAGES

**GTX03195 WB Image**

Various tissue extracts (50 µg) were separated by 10% SDS-PAGE, and the membrane was blotted with GluR2 antibody [GT1283] (GTX03195) diluted at 1:1000. The HRP-conjugated anti-rabbit IgG antibody (GTX213110-01) was used to detect the primary antibody.

**GTX03195 WB Image**

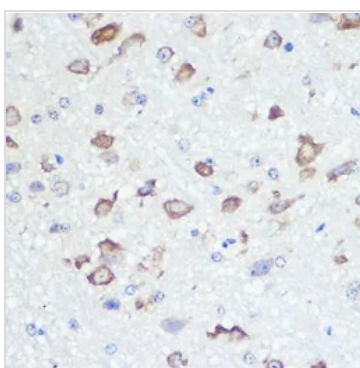
Human tissue extract (30 µg) was separated by 10% SDS-PAGE, and the membrane was blotted with GluR2 antibody [GT1283] (GTX03195) diluted at 1:1000. The HRP-conjugated anti-rabbit IgG antibody (GTX213110-01) was used to detect the primary antibody.

**GTX03195 ICC/IF Image**

ICC/IF analysis of SH-SY5Y cells using GTX03195 GluR2 antibody [GT1283].

Blue : DAPI for nuclear staining

Dilution : 1:100

**GTX03195 IHC-P Image**

IHC-P analysis of mouse brain tissue section using GTX03195 GluR2 antibody [GT1283].

Dilution : 1:100



For full product information, images and publications, please visit our [website](#).