

IGFBP7 antibody [GT1286]

Cat. No. GTX03198

Host	Rabbit
Clonality	Monoclonal
Isotype	IgG
Applications	WB, ICC/IF, IHC-P
Reactivity	Human, Mouse, Rat

Package
100 µl

Applications

Application Note

*Optimal dilutions/concentrations should be determined by the researcher.

Suggested dilution	Recommended dilution
WB	1:500 - 1:2000
ICC/IF	1:50 - 1:200
IHC-P	Assay dependent

Not tested in other applications.

Calculated MW 29 kDa. ([Note](#))

Properties

Form	Liquid
Buffer	PBS, 0.05% BSA, 50% Glycerol
Preservative	0.02% Sodium azide
Storage	Store as concentrated solution. Centrifuge briefly prior to opening vial. For short-term storage (1-2 weeks), store at 4°C. For long-term storage, aliquot and store at -20°C or below. Avoid multiple freeze-thaw cycles.
Concentration	0.8 mg/ml (Please refer to the vial label for the specific concentration.)
Immunogen	A synthesized peptide derived from human IGFBP7.
Purification	Purified by affinity chromatography
Conjugation	Unconjugated

Note

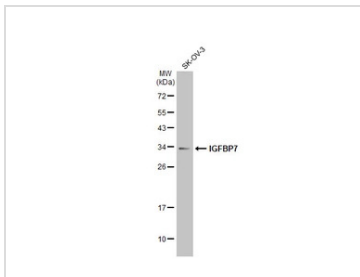
For laboratory research use only. Not for any clinical, therapeutic, or diagnostic use in humans or animals. Not for animal or human consumption.

Purchasers shall not, and agree not to enable third parties to, analyze, copy, reverse engineer or otherwise attempt to determine the structure or sequence of the product.



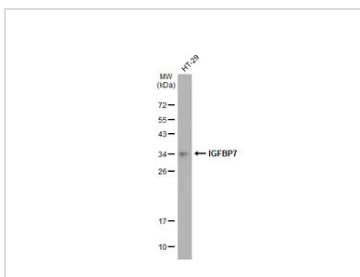
For full product information, images and publications, please visit our [website](#).

DATA IMAGES



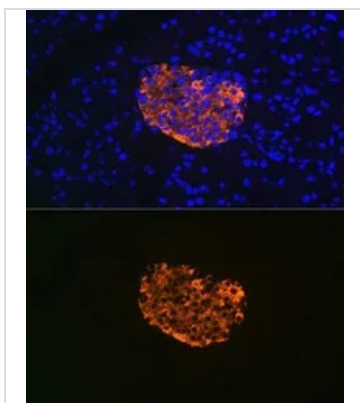
GTX03198 WB Image

Whole cell extract (30 µg) was separated by 12% SDS-PAGE, and the membrane was blotted with IGFBP7 antibody [GT1286] (GTX03198) diluted at 1:1000. The HRP-conjugated anti-rabbit IgG antibody (GTX213110-01) was used to detect the primary antibody, and the signal was developed with Trident ECL plus-Enhanced.



GTX03198 WB Image

Whole cell extract (30 µg) was separated by 12% SDS-PAGE, and the membrane was blotted with IGFBP7 antibody [GT1286] (GTX03198) diluted at 1:1000. The HRP-conjugated anti-rabbit IgG antibody (GTX213110-01) was used to detect the primary antibody, and the signal was developed with Trident ECL plus-Enhanced.

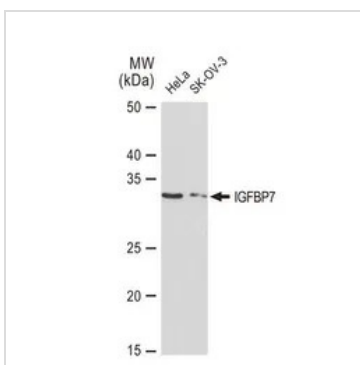


GTX03198 IHC-P Image

IHC-P analysis of rat pancreas tissue section using GTX03198 IGFBP7 antibody [GT1286].

Blue : DAPI for nuclear staining

Dilution : 1:100



GTX03198 WB Image

WB analysis of various samples using GTX03198 IGFBP7 antibody [GT1286].

Dilution : 1:1000

Loading : 25µg per lane



For full product information, images and publications, please visit our [website](https://www.genetex.com).